



Mater Research Annual Report 2022

The Heart to Heal, The Strength to Grow.

Our spirit is strong, it thrives as we embrace those whom we must always care for.

Our journey has been long and we will continue to flourish as we open our hearts to those who walk with us. **Always.**

Mater acknowledges that our services are provided on Aboriginal and Torres Strait Islander lands and pays respect to their Elders – past, present and emerging.

This artwork concept and narrative was developed by David Williams. David is a proud Wakka Wakka artist at Gilimbaa.





Contents

Foreword.....6	Program Reports 31	Catherine’s House for Mothers, Babies and Families..... 43
Executive Director Report.....7	Cancer Program..... 32	Grant Successes 2022 44
About Us9	Research Highlight: Cancer Program..... 33	Award list in full..... 48
Mission and Vision.....10	Chronic and Integrated Care Program 34	Publication information..... 50
Our Year at a Glance 12	Research Highlight: Chronic and Integrated Care Program 35	Publication list in full.....52
Our Strategy 15	Healthcare Delivery and Innovation Program..... 36	
Research Advisory Board..... 16	Research Highlight: Healthcare Delivery and Innovation Program 37	
Career Track Fellows 18	Mother and Baby Program 38	
Student Successes 20	Research Highlight: Mother and Baby Program 39	
Mater Student Research Committee.....23	Neuroscience Program.....40	
Early and Mid-Career Researcher Committee 24	Research Highlight: Neuroscience Program..... 41	
Equity, Diversity & Inclusion Committee.....25		
Mater Clinical Trials Service26		
Future Leaders Symposium28		
Mater Research Showcase29		

Foreword

I am delighted to provide an introduction to this Annual Report on behalf of the Research Advisory Board. My colleagues Professors Denise Doolan, Frank Gannon, Karen Moritz, Professor Sir John Savill and I would like to acknowledge the advances in medical science made by so many Mater Researchers in 2022, led by Professors Maher Gandhi and Allison Pettit.

The recent Mater Research Showcase provided an opportunity for Advisory Board members and our Foundation donors to see the valuable contributions being made by Mater Researchers and to congratulate award winners. Professor Anne Kelso AO's keynote, which outlined the new National Health and Medical Research Council (NHMRC) initiative to level the playing field for female researchers across the emerging and mid-career researcher and senior researcher spectrum, was very well received.

Mater Research has long been proactive in active support for career advancement of researchers identifying as female, allowing them to overcome some of the roadblocks that family and carer duties impose on women. Mater Research is proud that more than 50 per cent of its Group leaders are female and this was recognised in

the Employer of Choice Award from Women in Technology (WiT) in 2017 and as a finalist in 2022. Associate Professor Kym Rae won the 2022 WiT Inspiring Diversity in STEM Award.

The Mater Research Strategic Grant for Outstanding Women has been hotly contested since inception in 2017 and this year's winners were Dr Elizabeth Martin and Dr Jodi Saunus. We are very grateful to the Mater Foundation for supporting this important grant program, which has been instrumental in developing the careers of some of Mater's most successful researchers.

Now that Mater Research has matured, some of its research programs are already on the path to translation, either with commercial partners or directly to improve clinical practice.

The report highlights Dr Cathy Franklin, who won a targeted grant from the NHMRC who will use the Assessment Program she and her team developed in a trial to support General Practice Nurses to work with intellectually disabled people and to improve their health outcomes.

A/Professor Paul Dawson and Dr Elizabeth Hurriion developed a novel test for neonatal brain development now in clinical use.

The Mater Clinical Trials Service is an important part of the translation of products and procedures into the clinic and this is now very well managed by a capable team, led during most of 2022 by Dr Julie Cichero, who was Highly Commended by Women in Technology in the Community Impact Award. I also draw attention to the award of the Sister Madonna Josey Medal for years of outstanding service in respiratory and infection clinical trials to Ms Megan Martin.

Professor Maher Gandhi was recognised in one of TRI's Top 10 Translational Achievements for his discoveries in viral associated lymphomas that led to a new treatment and was awarded a \$2.8M grant to trial it.

A/Professor Ingrid Winkler and Glycomimetics are now testing the novel drug, Uproleselan, in a phase 3 clinical trial – the last stage of new drug development.

The chart on page 12 shows just how much activity has occurred in 2022.

The Research Advisory Board congratulates all the award and grant winners of 2022 and wishes the Mater Research team success in 2023.



Dr Carrie Hillyard AM
FTSE FAICD

Executive Director Report

I write this, in the lead up to the New Year, a moment in time when it seems fitting to look back at what we have achieved and acknowledge all our amazing researchers and professional staff within Mater Research that made it happen.

As illustrated by 'Our Year at a Glance' by any standards, 2022 was a big year, with a number of notable achievements, as our researchers continue to tackle global challenges in health and medical research.

Across our research programs there are so many success stories. Exemplifying the importance of evidence-based practice, in our story on Professor Janet Hardy and her colleague Professor Phillip Good, we learn that not all is as it has been hyped up to be with medicinal cannabis. Despite very limited evidence of its benefit, the use of cannabis for therapeutic benefit has risen exponentially over the past few years. Janet and Phillip's Medical Research Future Fund (MRFF) funded trial, aimed to determine whether cannabidiol (CBD), a key component of cannabis, resulted in better symptom control in patients with advanced cancer than standard palliative care. Although well tolerated, CBD was no better than placebo in improving individual symptoms, depression/anxiety, and quality of life or reduce requirements for pain relief.

We look forward to the outcomes from their follow-up study, an ongoing MRFF funded trial that tests other medicinal cannabis combinations.

For those of you with a more biomedical disposition, I recommend turning to the pages on Professor Katharina Ronacher. Her work on the oxysterol-sensing receptor GPR183 resulted in a discovery that receptor blockade lessened the severity of COVID-19 in animal models, paving the way for a new therapeutic approach. Her discovery that the receptor is also pivotal to the host response to Tuberculosis, led to an NHMRC Ideas Grant. Her recent elevation to a full Professor, is clearly well-deserved.

Amongst other 'firsts', these pages also outline big strides Mater Researchers made across such diverse areas as the genetics of transposons, in new service provision models for intellectual disability, and in the prevention of fetal distress. Recognition of the quality of research undertaken is the external support they receive from prestigious overseas and national funding bodies such as the NHMRC. But to continue their amazing work, Mater Researchers also need the support and generosity of donors to Mater Foundation, so that they can spend their valuable time on research, and less time applying for scarce research dollars from grant funding bodies.

Central to the successful translation of research, is the Mater Clinical Trials Service. Despite major challenges to enrolling patients and following protocols including the ongoing 'stop-start' that comes with COVID-19, staff recruitment issues and the like, our staff continue to provide an exemplary service. Without their dedication, patients would not be able to access the latest innovations and therapies that are so central to achieving healthy outcomes.

These are just a few examples of the work we are so proud to undertake. I'd like to extend my warmest thanks to everyone who contributed to Mater Research's success in 2022, including Mater Foundation and all the philanthropists who support it, our Research Advisory Board, our students, researchers and professional staff, to the University of Queensland, to the Clinical Trialists, and of course our fellow ministry partners at Mater Health and Mater Education.

It's my pleasure to introduce the 2022 Mater Research Annual Report. I hope you enjoy reading about our endeavours and feel inspired to continue to be engaged with our mission to discover, translate and integrate. Thank you for your ongoing support.

Happy New Year.



Professor Maher Gandhi
Executive Director



About Us

Based on a bench-to-bedside philosophy, Mater Research is a recognised leader in medical research and is the research arm of Mater. Collaboration sees us working across Mater Health's hospitals and health services, Princess Alexandra (PA) Hospital and our partners The University of Queensland, the world-class Translational Research Institute (TRI) and Health Translation Queensland (HTQ).

We have a strong commitment to working closely with Mater Health, Mater Education and our growing network of partners and collaborators to turn scientific discovery into the best possible treatment, care, and outcomes for patients and the broader community.

Our strong track record of successful grant applications and fellowship recipients is underpinned by the significant financial support of the Mater Foundation which contributes millions of dollars to fund pilot clinical trials, research projects, vital infrastructure and resources, student scholarships and backfilling clinical time to enable more clinician-led research and fellowships for our senior researchers. This allows us the flexibility to sustain research beyond short-term grants.

With expertise across all facets of medical research—study design, ethics and governance, data collection, biobank management, analysis, and implementation science—we are responsible for the robust management of all research and clinical trials at Mater.

We also maintain a broad external focus, horizon scanning national and international high-quality research to reduce duplication of effort and wasted resources, working alongside Mater Education and Mater Health to support the prompt and efficient translation of research into clinical care.

Leadership

Executive Director and Director Clinical Research



Professor Maher Gandhi

Holding the roles of Executive Director and Director of Clinical Research, Maher's role is to set strategy and create clinical research programs that influences future national and international health policy and practice through the full integration of Mater Research with clinical care.

Director Biomedical Research



Professor Allison Pettit

In her role as Director of Biomedical Research, Allison provides oversight, leadership and guidance in the management and execution of biomedical research activities at Mater. She is involved in strategic planning, developing and executing organisational frameworks and supports improving clinical connectivity of biomedical research activity.

Director Operations



Ms Emily Bailey

As Director of Operations, Emily oversees a portfolio which is responsible for the operational management of Mater Research (including finance, facilities and compliance), continuing to strengthen existing and new partnerships, and research commercialisation activities.

Mission and Vision



Vision

To translate our research discoveries and integrate them into improved healthcare.



Mission

To **discover** new knowledge central to the Mater mission, **translate** this knowledge into practice and **integrate** these research outcomes into improved healthcare and educational practices across Mater.

Mercy Values

Mater Research wholeheartedly commits to the Mater Values:

- We honour and promote the dignity of human life and of all creation
- We act with compassion and integrity
- We strive for excellence.



Mater Research

In addition to the Mercy Values, working across our five research programs Mater Research is committed to upholding the values relating to our scientific, medical and management mission:

- **Integrity** – we conduct ourselves and our work honestly and ethically to build a culture of excellence.
- **Innovation** – developing and extending knowledge to improve health.
- **Inspiration** – educating and imparting knowledge to inspire each other and future generations.
- **Engagement** – fostering and encouraging teamwork, collaboration and commitment to the community.



Our Year at a Glance





Our Strategy

To achieve health impact through integrated research excellence:



Develop the quality and output of researchers in Mater-relevant areas of focus.



Enhance Mater's expertise in areas of excellence through high-quality research.



Ensure the balance of research across discovery, translation and integration is aligned with Mater's strategy.

Establish and maintain a strong culture of collaboration to deliver greater outcomes in line with Mater's strategy:



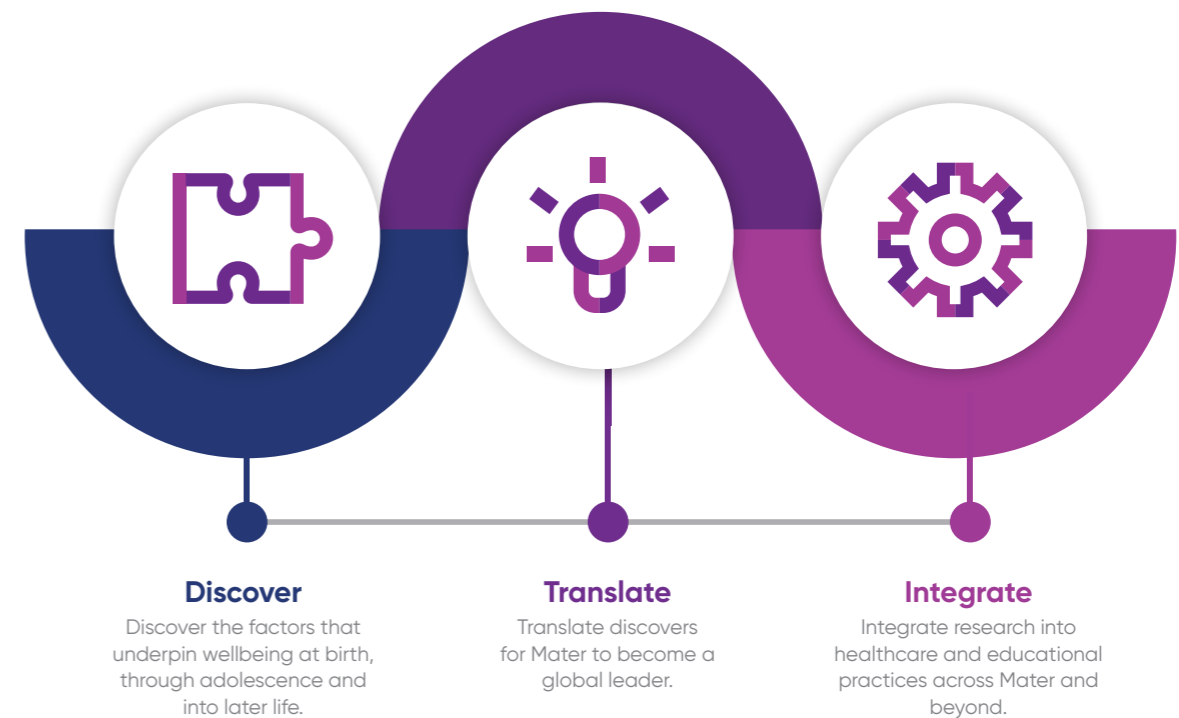
Drive research programs that reflect integration, prioritise preventative health and enhance community wellbeing.



Develop links with academic institutions and commercial agencies.



Prioritise internal and external partnerships in areas of strategic focus.



Research Advisory Board

The Research Advisory Board is established to provide independent strategic advice on clinical research or scientific-related matters to the Mater Research Executive Leadership and Mater Chief Executive Officer.

Dr Carrie Hillyard AM Board Chair

Dr Carrie Hillyard AM chairs the Australian Pesticides and Veterinary Medicine Authority and Fitgenes Australia Limited boards and was a Director of the Academy of Technology and Engineering (ATSE) until 31 December 2022. Previously, she was a co-founder of venture fund, CM Capital Investments, a Director of several of its investee companies and led its Life Sciences group. Dr Hillyard AM served as Deputy Chair of the Mater Research Board from 2007–2020.



Professor Denise Doolan

Professor Denise Doolan is Deputy Director (Research) of The University of Queensland's Institute for Molecular Bioscience and former Director of the James Cook University Centre of Molecular Therapeutics. She is a member of The Australian Medical Research Advisory Board.



Professor Frank Gannon

Professor Frank Gannon was the Director and CEO of QIMR Berghofer Medical Research Institute from 2011 to 2020 and has been the Director General and board member of Science Foundation Ireland (The Irish Research Funding Agency) since 2007.



Professor Sir John Savill

Professor Sir John Savill has been Executive Director of the Melbourne Academic Centre for Health (MACH) since July 2019, having served in the United Kingdom as an honorary consultant in renal and acute medicine from 1990 to 2018.



Professor Karen Moritz

Professor Karen Moritz was appointed Director of the Child Health Research Centre in 2016 and in 2021 became the Associate Dean of Research at The University of Queensland's Faculty of Medicine.



Career Track Fellows

Mater Research recognises that for full-time health researchers the period between postdoctoral research and the establishment of research independence is often challenging.

The purpose of Mater Research's Career Track Fellow (CTF) program is to provide high-potential emerging investigators with a pathway to progressively build stepwise independence in a supportive environment that provides a high level of mentoring and exposure to research leadership mechanisms and research group management responsibilities. Previous CTFs who have recently transitioned to independence are Dr Katharine Irvine and Dr Seth Cheetham.

Mater Research is currently mentoring four CTFs.



Dr Ran Wang

Immune activation is the key to combating bacterial and viral infections. However, in some cases, overactivated immune cells are not only killing the bacteria or virus but also causing damage to our own body via releasing a large amount of immune mediator – “cytokine” to cause harm. Dr Wang and collaborators have been developing a “sponge-like” material that can “mop up” excess cytokines, dampening the overactivated immune response. Preliminary data shows that the novel material reduced immune activation and lessened tissue damage in a pre-clinical model of inflammatory bowel disease. The team is excited to test the material in other diseases where bystander health tissue damage contributes to morbidity and mortality including COVID-19 in the future.



Dr Camille Guillerey

As part of the Cancer Immunotherapy Group, Dr Camille Guillerey leads a small research team focusing on Natural Killer (NK) cells, which are blood-circulating lymphocytes with potent anti-cancer properties. As part of the international top 100 authors in the field of immune responses to multiple myeloma, Dr Guillerey's contributions to cancer research have been, and continue to be, highly significant. Dr Guillerey's research has provided invaluable contributions to the understanding of two immune cell types: Natural Killer (NK) cells and Dendritic (DC) cells. Dr Guillerey's work spans a total of 28 publications.



Dr Mitchell Sullivan

Dr Mitchell Sullivan is an expert in the energy storage molecule glycogen, a glucose or sugar “battery” and how perturbations in glycogen can contribute to disease. Dr Sullivan published eight research articles in 2022 sharing the work of his group and collaborators towards understanding whether the abnormal accumulation of glycogen molecules within kidneys contributes to diabetic kidney disease. Dr Sullivan is also focusing on why individuals with diabetes are at a higher risk of severe disease after SARS-CoV-2 infection (the virus responsible for COVID-19). He is currently testing a new therapy in pre-clinical models of these diseases with preliminary data promisingly indicating that it lessens the severity of symptoms in diabetic pre-clinical models infected with SARS-CoV-2.



Dr Jodi Saunus

Dr Saunus was recruited to Mater Research in 2022 through a successful bid for a postdoctoral fellowship offered by The University of Queensland in association with COVID-19 pandemic-driven increased Federal Budget injection of the Block Grant Research Support Package. Dr Saunus has already made significant breast cancer research progress in her short time at Mater Research including initiating a new study to identify why some breast cancer patients respond well to chemotherapy while others don't. In collaboration with the Mater Breast Cancer Centre, and Mater breast cancer patients who donate breast tissue samples for research, this study focuses particularly on

“triple-negative breast cancer” – a subtype that tends to affect younger women and those with BRCA1 gene mutations. The team, which includes a breast care nurse consultant, an oncologist Dr Kathryn Middleton, and Mathematician A/Professor Dan Nicolau Jr (King's College London) will apply new single-cell sequencing technology to survey the cancer genome in tumour samples from patients who have complete versus incomplete responses to chemotherapy. Dr Saunus was this year's recipient of the Mater Research Strategic Grant for Outstanding Women, which has funded the pilot phase of this project.

Career Track Fellows who in 2022 were promoted to Group Leaders either at Mater Research or other research organisations include:



Dr Seth Cheetham

Dr Seth Cheetham is an NHMRC Early Career Fellow and has recently been promoted to Group Leader at the Australian Institute for Bioengineering and Nanotechnology at The University of Queensland. After his Bachelor of Science (Hons) at The University of Queensland, he completed his PhD at the University of Cambridge, supported by the Herchel Smith Research Studentship.

Dr Cheetham is a molecular biologist and geneticist with a focus on synthetic biology, RNA medicines and epigenetics and was recently awarded a prestigious Australian Research Council Discovery Early Career Research Award (DECRA) Fellowship.



Dr Katharine Irvine

Dr Kate Irvine has been formally promoted to Group Leader within the Chronic and Integrated Care Program. In parallel, Dr Irvine has also been successful in an academic promotion to Associate Professor at The University of Queensland with this appointment being recognised from 01/01/23.

Dr Irvine will head the Innate Immunity and Inflammation Laboratory with a research program including

dissecting the roles of macrophages in homeostasis, inflammation and tissue regeneration, with a particular focus on chronic liver disease. Dr Irvine aims to exploit knowledge of macrophage biology to understand the development of chronic inflammatory disease, and to identify macrophage-targeted therapies to treat disease or promote tissue regeneration.

Student Successes

Dr Chloe Yap



Chloe won the CSL Florey Next Generation Award. This is a prestigious award conferred to a current PhD candidate who has demonstrated outstanding capability, creativity and potential in the biomedical sciences and/or health and medical research. This award was developed from the CSL Young Florey Medal.

She was also a winner of the Best Presentation by a HDR Student at The University of Queensland Faculty of Medicine Research Week.

Chloe recently graduated as valedictorian with dual medical doctor and PhD qualifications.

Selwin Samuel



Selwin won the following awards:

- Peter Blundy Small Grant from SpinalCure Australia to attend the BSI Annual Congress
- ASI (Australia and New Zealand Society for Immunology) Travel Bursary to attend the ASI Annual Congress
- Judges' choice and People's choice at The University of Queensland 2022 Faculty of Medicine HDR symposium
- Mater Research International Student Travel Award to attend the BSI Annual Congress

Hareshh Sajiir



Hareshh won the Mater Research International Student Travel Award.

Anthony Johnson



Anthony won the Mater Research 3MT Honours Competition (Judge's Choice Award).

Hayley Favelle

Hayley won the Mater Research 3MT Honours Competition (People's Choice Award).

Rabina Giri



Rabina won Best Abstract Prize at the Falk Symposium in Frankfurt Germany.

Jennifer Stables



Jennifer won the following awards:

- Dr David Serisier Student Training Award
- 2022 Mater Research HDR Biomedical Student Prize
- The University of Queensland Faculty of Medicine 3MT (People's Choice Award)
- Mater Research 3MT (Judge's Choice Award).

Aleysha Martin



Aleysha won the 2022 Dr Laurence Catley Clinical Student Prize presented at the Mater Research Showcase.

Taylan Gurgenci, Kayden Kwah and Lashith Wickramasuriya were all successful recipients of the Equity Trustees' support, with contributions towards their Frank Clair Scholarships.





Mater Student Research Committee

In 2022, the Mater Student Research Committee (MSRC) led numerous activities to attract new students and support a high-quality research program for the 120+ students at Mater.

The Committee's annual student information event as well as participation in The University of Queensland Honours Week events, showcased more than 40 research projects on offer for students to commence in 2023.

Some highlights of the MSRC-led activities include:

- Peer-review of more than 20 student applications
- A series of professional development training courses for our HDR students
- Review and administration of the international travel awards including the Dr David Serisier student training award
- Development and implementation of the Mater Mates mentoring program

- Weekly communication via the "Happy Wednesday" email
- Monthly Mater Research Mixer
- Honours student research presentation events
- Mater Research 3MT with PhD student Jennifer Stables progressing to win the Faculty of Medicine People's Choice Award and then competing in The University of Queensland 3MT wildcard
- A student local retreat.

Monthly meetings were held by the MSRC members:



Prof Brian Gabrielli
(Chair)



Dr Kylie Alexander
(Deputy Chair)



A/Prof Paul Dawson
(Head of Education)



Prof Liisa Laakso



Dr Christine Andrews



Dr Camille Guillerey



Dr Kavita Bisht



Dr Jay Gunawardana

Student representatives:

Jennifer Stables
Thomas Mullins
Madeline Gough
Hareshh Sajir
Veronika Schreiber
Jade Kubler

Secretariat:

Sarah Doyle (Student Recruitment and Administration Officer)

Early and Mid-Career Researcher Committee

The Early and Mid-Career Researcher Committee (EMRC) aims to offer peer support, professional development opportunities, enhance research capability and create a safe space to discuss research. We currently have over 50 EMCRs supported by this Committee. The committee is chaired by biomedical researcher, Dr Kavita Bisht, health services researcher, Dr Christine Andrews and clinical researcher, Dr Joshua Tobin.

This leadership trio ensures that the priorities of the diverse EMCR cohort at Mater Research are well represented. The Committee would also like to acknowledge Dr Camille Guillerey who recently stepped down as the biomedical research chair.

We have EMCR leads promoting:

- mentoring processes
- grant writing support
- social and networking opportunities
- scientific discussions
- outside academic connections, and
- Mater Foundation links.



In the past year, they organised many events to support EMCRs. Key highlights include:

- Establishing mentoring opportunities and initiating collaborations between biomedical EMCRs and clinician researchers including TRI LINC grants and some Medical Research Future Fund (MRFF grants).
- Establishing an online platform: "Confluence", where Mater EMCRs can share and discuss their skills, projects, and career tips.

- Grant writing support workshops.
- Informal discussions with external speakers to discuss opportunities outside academia.
- Social networking events such as breakfasts, escape room adventures and dinners.

Overall, the scope of support for Mater EMCRs provided through the Committee would not be possible without the combined contributions and leadership of all members.

Committee Co-chairs



Dr Kavita Bisht



Dr Christine Andrews



Dr Joshua Tobin

Equity, Diversity and Inclusion Committee



The aim of the Committee is to promote the diverse backgrounds, experiences and identities of colleagues across Mater Research.

Their focus has been to raise the profile of the Equity, Diversity and Inclusion (EDI) Committee and increase their commitment and accountability at Mater Research.

International Women's Day (IWD) Event

IWD was led by Committee members, Dr Sandra Richardson, and Dr Soi Law. There was an engaging discussion on how to "Break the Bias" in medical research and to work together to forge a gender-equitable world. Thank you to the panellists, Prof Janeen Baxter, A/Prof Terrance Fitzsimmons, Dr Alison Rice (chair), Prof David Hume and Dr Helen Benham (pictured above).

The Committee contributed to a range of other events at TRI and Mater including RU OK day, Wear it Purple Day bake sales and Mental Health Week.

First Responders Event

At the Sexual Harassment Awareness and Prevention (SHAP) Week, five of the EDI Committee members were trained as First Responders. First Responders provide a safe and supportive environment for survivors of sexual assault and sexual harassment to receive information on the support services that are available.

The Committee continued its efforts to promote diversity by:

- reaching gender/career stage balance on the EDI Committee
- auditing and reporting on diversity considerations for Mater Research-led symposia
- increasing awareness and initiatives to bolster equity
- helping bring the vacation care program to TRI for parents, and
- leading the assessment of Strategic grant for Outstanding Women.

Each one of us has a role to play in building a more equitable, inclusive, and diverse work environment, and we are committed to promoting this at Mater Research. The Committee welcomes feedback and can be contacted at ediresearch@mater.uq.edu.au or contact EDI Committee Chair, A/Prof Sumaira Hasnain at sumaira.hasnain@mater.uq.edu.au

Mater Clinical Trials Service



Mater Research provides support for clinicians to run clinical trials in Mater's therapeutic focus areas including Maternal & Neonatal Health, Medical Oncology, Gynaecological Oncology, Neuroscience, Respiratory Disease, Infection, Haematology, Liver Disease, Metabolic Medicine, Intensive Care and Surgery.

Clinical trials are an important component of modern healthcare. The knowledge gained through clinical trials is essential to support evidence-based practice. Clinical

trials also give patients access to the latest investigational therapies and provide alternative treatment options to patients with unmet medical needs under the current standard of care.

Mater clinicians leading trials are supported by teams of specialist research staff within Mater Clinical Trials, including Clinical Research Managers, Clinical Trial Coordinators, Research Nurses, Research Assistants, Administrative Assistants, Technicians and other specialists. Without the expertise and dedication of our clinical research staff, our life-changing clinical trials would not be possible.

There are currently 206 active clinical trials at Mater, which aim to evaluate the safety and efficacy of experimental medications, medical devices, or other health interventions.

These trials include 115 studies sponsored by Pharmaceutical and Medical Device companies, 51 collaborative group trials, and 40 Investigator-initiated trials. Dr Julie Cichero was acting Senior Manager of the service for much of 2022.

The following examples illustrate the broad variety of clinical trials being conducted by Mater Research.

Practice-Changing Clinical Trials in Cystic Fibrosis

Mater's Respiratory, Infectious Disease and Oncology (RIO) Clinical Trials team has been working with Pharmaceutical companies to develop the first highly effective treatment for Cystic Fibrosis.

Cystic Fibrosis is a genetic condition, predominantly affecting the lungs, leading ultimately to respiratory failure and death. Mater has the second-largest adult Cystic Fibrosis Unit in Queensland, caring for over 150 adults with this condition. As recently as 10 years ago, Cystic Fibrosis was a fatal condition with an average life expectancy of around 30 years.

On average, the Mater Clinical Unit was referring 3-4 patients for lung transplantation every year.

Since 2007 the RIO unit has been participating in both early and late-phase clinical trials giving Mater Cystic Fibrosis patients access to these treatments at an early stage. On 1 April 2022, one of these highly effective medications (Trikafta) came on to PBS, profoundly changing the course of this disease. This drug is so effective that it provides a "functional cure" for the condition, akin to HIV medications in the treatment of AIDS.

The Mater respiratory clinical and research units work closely together to identify patients for these life-changing studies. A typical example is "Sarah" a young patient with Cystic Fibrosis under assessment for transplant.

Her lung function was down to 35 per cent. The entry criteria for the clinical trial was 40 per cent. The clinical and research teams worked together to optimise Sarah clinically to enable her to successfully screen onto the study. She started treatment on trial in 2017, later rolling into an open-label extension study, and recently transitioned to PBS-funded treatment. Her lung function is now nearly 60 per cent, she is off the transplant list, working full time and planning a family. Things that were not possible for her just a few years ago.

This is why we do clinical trials.

Trialling New Treatment Options for Difficult to Treat Cancers

The Medical Oncology Clinical Research team, led by Dr Cath Shannon, currently manages 75 studies, with 20 actively recruiting trials, 40 studies with patients in follow up and 15 new studies set to commence in the coming year. Our trials address a range of cancer types, with a special focus on women's cancers. Preference is shown towards trials utilising novel treatment types, and in disease states without good treatment options for patients. Clinical trials also give patients access to otherwise high-cost treatments that have promising early clinical data, but that are not yet available through standard treatment channels. Patients are recruited through the Mater Cancer Care Centre, and through referrals from the greater Brisbane

and Central Queensland regions and regional areas throughout Queensland.

Six current phase-one studies are trialling novel treatments for a variety of solid tumour types, including breast, ovarian and urogenital cancers. These studies investigate the safety, tolerability and clinical activity of newly developed drugs, often with a novel therapeutic mechanism of action, in patients with advanced and progressive disease which has failed to respond to standard therapies, or where there is no established standard therapy.

These studies can provide unique opportunities for patients to support the development of knowledge regarding both disease states and promising new therapeutic options.

"Of course, I want to do something to prevent my cancer from coming back. Doing nothing, when I have the option to take part in a trial and do something, that's an easy decision for me."

- Mater Clinical Trials patient

Patient-reported outcomes and quality-of-life measurements provide information regarding the lived experiences of patients enrolled in our trials. This information, combined with objective data relating to rates of disease progression and adverse events, allow biostatisticians to make meaningful conclusions regarding the safety and efficacy of novel compounds in difficult-to-treat cancers.

Future Leaders Symposium



The annual Future Leaders Symposium was held at TRI on Thursday 9 September 2022 and commenced with the inaugural Professor John Prins Oration, which honours the contributions of the former Mater Research CEO.

This year's oration was a clinician-consumer partnership talk between Dr Lisa Gillinder and Mr Kasey Lucas that highlighted the implementation of Dr Gillinder's epilepsy research at Mater, as well as the health benefits of this clinical research for Mr Lucas.

Mr Lucas, through Dr Gillinder's research activity, has been able to participate in clinical trials allowing him access to novel treatments for autoimmune encephalitis.

The Symposium included presentations from Mater Research's best and brightest Clinical and Biomedical PhD students, and early-mid career researchers.

Competitive international travel awards were presented to PhD students Selwin Samuel and Hareshh Sajjir to assist with their attendance and research presentations at overseas conferences. The prestigious Dr David Serisier Student Training Award and the Mater Research Higher Degree Biomedical Student Prize were presented to PhD student Jennifer Stables who will travel to California and Melbourne to showcase the outcomes of her laboratory-based research into the biology of multiple sclerosis.

Early Career Research Seeding Grants were awarded to clinical researcher, Dr Grace Branjerdporn who will evaluate the consumer experience and economic outcomes in families attending the soon to open Catherine's House for Mothers, Babies and Families at Mater; and biomedical researcher, Dr Natasha Jansz who will investigate the genetics of a retrovirus (HTLV-1) that is endemic in central Australia.

Mater Research Showcase

The Mater Research Showcase 2022 highlighted the outstanding research contributions and achievements made over the last 12 months.

The annual event with over 170 attendees was held at the Translational Research Institute (TRI) and recognised the ground-breaking work of Mater Research's emerging and experienced biomedical and clinical researchers, toward better health outcomes for the community.

Mater Research Executive Director, Professor Maher Gandhi highlighted how research at Mater fosters internal and external collaborations and through a combination of philanthropic support and external government grants, has enabled Queensland to have a global impact.

Professor Anne Kelso AO, CEO of the National Health and Medical Research Council, gave an overview of the NHMRC's agenda for 2022-2023 in her keynote, including current funding trends and proactive measures taken by the NHMRC to encourage greater creativity and innovation, and bring about better gender equity and diversity in Australia's medical research industry.

The attendees had an opportunity to learn about the history and heritage of Mater Research from Associate Professor John Burke AM, former Chairman of the Mater Medical Research Institute Development Council, and Sister Anne Herrington RSM.



The Mater Research Prizes and Sister Medals awardees were also announced at the Showcase, recognising those who performed above and beyond in their roles in 2022. The five recipients of the 2022 Betty McGrath Seeding Grants were also announced.

"Throughout this time Mater Research has been consistent, focussing on the unmet needs of the vulnerable, indigenous, and culturally diverse. Over the course of our history, the biggest asset of Mater Research is our people and that is what makes Mater Research so special."

- Professor Maher Gandhi

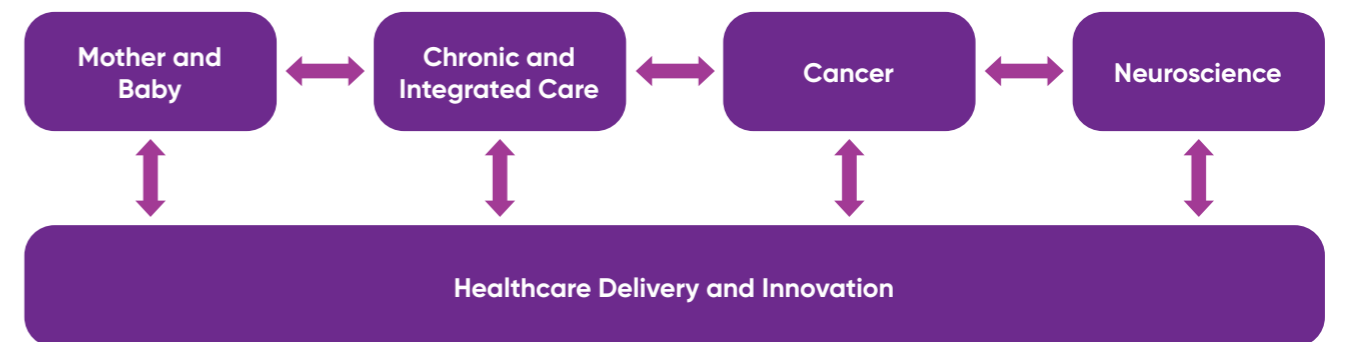


Program Reports

Mater Research is a recognised leader in medical research. Our bench to bedside philosophy means we are committed to working closely with Mater Health, Mater Education and our collaborating partners to turn scientific discovery into the best possible treatment, care, and outcomes for patients and our broader community.

Four of our programs are co-led by a clinical and biomedical lead, while our Healthcare Delivery and Innovation program has a medical and nursing co-lead. Our programs are Cancer, Chronic and Integrated Care, Healthcare Delivery

and Innovation, Mother and Baby and Neuroscience. We encourage our programs to be interlinked, and many of our research groups perform ground-breaking research that spans across individual programs.



Cancer Program

Researchers within this program study the biological basis of solid and blood borne malignancies, and approaches to improving diagnostics. The continuing outcomes of this research are discovery, development and trialling of new therapies and diagnostics, as well as improving all aspects of the management of cancer for all patients, including palliative care.

Program Leads:



Professor Kristen Radford
(Biomedical)



Professor Janet Hardy
(Clinical)

Group Leaders:



Professor
Maher Gandhi
Blood Cancer Research



Professor Allison Pettit
Bones and Immunology
Research



Professor John Hooper
Cancer Biology Research



Professor Kristen Radford
Cancer Immunotherapies
Research



Professor Janet Hardy
Palliative Care Research



Professor Brian Gabrielli
Smiling for Smiddy Cell
Cycle Melanoma Research



Associate Professor
Ingrid Winkler
Stem Cells and
Cancer Research



Dr Adam Ewing
Translational Bioinformatics
Research



Research Highlight: Cancer Program Professor Janet Hardy

Professor Janet Hardy is a Senior Researcher, a Clinical co-lead of the Cancer Program and leads the Palliative Care Research Group at Mater Research. In addition to these Mater Research roles she is also the Medical Director of the Mater Cancer Care Centre, the Director of Palliative Care and the Acting Medical Lead of the Cancer Care Stream at Mater.

Prof Hardy leads the Palliative and Supportive Care Research Group which is a large multi-disciplinary group of health professionals dedicated to the care of people with advanced life-limited diseases. The group runs clinical trials to improve the quality of life of people with advanced cancer. They trial drugs and interventions to improve the management of common symptoms such as pain, nausea, shortness of breath and delirium.

Despite recent advances, patients still experience substantial symptom distress. Whilst medication provides a core component of improving symptoms, there remains a need for

more effective options to improve symptom control, especially in areas such as fatigue, anorexia, anxiety and weight loss.

Cannabis presents an alternate "natural" option for managing these symptoms. Medicinal cannabis has been approved by the Australian Government without the usual clinical evidence to guide its use by physicians. Over the last few years, Prof Hardy's research group has focused on trying to define a role for medicinal cannabis in palliative care.

There are so many "unknowns" when it comes to medicinal cannabis. For example, which of the large number of cannabinoids found in the cannabis plant is best suited to which symptom, what is the best dose, how often and what are the dose-limiting side effects?

As recipients of two Medical Research Future Fund grants, the Palliative and Supportive Care Research Group has been able to launch a number of clinical trials to investigate these issues. Their first study, published in the prestigious Journal of Clinical

Oncology in 2022, showed that the use of pure cannabidiol (CBD) over good palliative care alone did not provide any benefit in reducing symptom burden. Sub-studies are investigating whether cannabinoids do have anti-inflammatory properties, whether cannabis might be a good natural treatment for insomnia and whether only those with a certain genetic makeup will respond to cannabis.

Prof Hardy's group is currently running a second trial to look at the impact of tetrahydrocannabinol (THC) – a potentially intoxicating, psychoactive component of medicinal cannabis – used in combination with CBD, on palliative care patients with advanced cancer. This trial will determine whether THC, despite having psychoactive effects, is the "secret ingredient" and of greater benefit for patients in palliative care. The findings of this trial should be ready to publish in mid-2023.

There is also a third trial that will use a different combination of CBD and THC to see if this is of greater benefit to patients in palliative care.

"Over the last few years, our research group has focused on trying to define a role for medicinal cannabis in palliative care."

– Professor Janet Hardy

Chronic and Integrated Care Program

This program is focused on studying the pathophysiology and management of chronic diseases and using this information to direct the discovery of new therapies and preventative strategies to address unmet needs. Research is currently being conducted into Type 1 and Type 2 diabetes and associated complications, inflammatory bowel diseases, chronic respiratory and infectious diseases, chronic liver disease and cardiovascular and renal disease.

Program Leads:



Professor Josephine Forbes (Biomedical)



Associate Professor Lucy Burr (Clinical)

Group Leaders:



Professor Kim Summers
Genetics, Genomics and Transcriptomics Research



Professor Josephine Forbes
Glycation and Diabetes Complications Research



Associate Professor Sumaira Hasnain
Immunopathology Research



Professor Katharina Ronacher
Infection, Immunity and Metabolism Research



Associate Professor Jake Begun
Inflammatory Bowel Diseases Research



Dr Katharine Irvine
Innate Immunity and Inflammation Research



Professor David Hume
Macrophage Biology Research



Associate Professor Lucy Burr
Respiratory and Infectious Diseases Research



Professor Jean-Pierre Levesque
Stem Cell Biology Research



Research Highlight: Chronic and Integrated Care Program Professor Katharina Ronacher

Professor Katharina Ronacher is a Principal Research Fellow at Mater Research where she leads the Infection, Immunity and Metabolism Research Group. Prof Ronacher's Research Group aims to identify why individuals with underlying metabolic conditions (i.e. obesity and diabetes) are more susceptible to infectious diseases such as COVID-19, Influenza and Tuberculosis.

Prof Ronacher's lab investigates the immune-endocrine connection between Type 2 Diabetes and infectious diseases, in particular Tuberculosis. Her area of research has attracted worldwide interest largely due to the threat of a resurgence in Tuberculosis with the increasing prevalence of diabetes—The World Health Organisation (WHO), the International Union against Tuberculosis and Lung Disease and the World Diabetes Foundation, since 2011, have called for global action on this topic.

Prof Ronacher has been recently awarded a \$1.5m NHMRC Ideas grant, this project will address the current gaps and builds on the team's ground-breaking discovery that oxidised cholesterol are produced in the lung upon mycobacterium tuberculosis infection

to chemotactically attract immune cells via the oxysterol-sensing receptor GPR183. Pre-clinical models unable to upregulate the oxysterol producing enzyme CYP7B1 and pre-clinical models deficient in GPR183 have delayed macrophage infiltration into the lung upon M tuberculosis infection which is associated with more severe Tuberculosis.

In addition, and in response to the global COVID-19 pandemic, Prof Ronacher's group also works to identify and test novel therapies to reduce the severity of bacterial and viral respiratory infections including COVID-19 to improve treatment outcomes in patients both with and without underlying metabolic conditions.

Prof Ronacher's research group recently published a paper in the prestigious European Respiratory Journal regarding the outcomes of their study that identified a key cause of severe COVID-19 infections and exposed a novel treatment strategy for the disease. The researchers tested an existing drug that blocks cholesterol receptors on immune cells and found that it significantly lessens the severity of the disease in pre-clinical models infected with SARS-CoV-2. This was at least partly

due to the drug significantly reducing viral loads in the pre-clinical models.

Prof Ronacher's study is a significant step towards developing a successful new treatment for both existing and future variants of COVID-19, especially as the problem we now face when treating COVID-19 is that drug-resistant variants are emerging.

The drug that Prof Ronacher's group has tested is not an anti-viral which means that it does not attack the virus, instead, it works by targeting the host's own immune system and could be used as new viral variants emerge that are resistant to anti-viral drugs. This is a very exciting study and one which we hope could significantly improve the future treatment of patients with severe COVID-19.

There are suggestions that the drug will also be effective in humans and warrants human clinical trials. It is hoped that clinical trials of the oxysterol receptor drug will be undertaken by the pharmaceutical industry, while Prof Ronacher's team will continue research to better understand how targeting this pathway reduces viral loads in pre-clinical models to inform the development of more effective novel drugs.

"Our study is a very significant step towards developing a successful new treatment for both existing and future variants of COVID-19.."

– Professor Katharina Ronacher

Healthcare Delivery and Innovation Program

This program focuses on facilitating research that improves the care and well-being of people accessing health services at Mater Health and across the nation, through the development and design of robust, effective, multidisciplinary clinical questions that translate into effective practice and policy. This activity has an impact across all the Mater Research Programs and Mater Health disciplines. This program brings together education, health economics and implementation science, with active consumer input to address research topics of relevance to the community. Many Mater clinicians and educational specialists also actively undertake health services research across Mater campuses.

Program Lead:



Associate Professor
Simon Denny
(Clinical)

Group Leaders:



Dr Liisa Laakso
Allied Health Research



Professor
Sandie McCarthy
Living Well with
Cancer Research



Associate Professor
Simon Denny
Mater Young Adult Research



Dr Cathy Franklin
Queensland Centre
for Intellectual and
Developmental Disability



Research Highlight: Healthcare Delivery and Innovation Program Dr Cathy Franklin

Dr Cathy Franklin is a psychiatrist specialising in intellectual and developmental disability in adulthood. In 2015 she was appointed as a Senior Medical Officer with Mater Health and as a Senior Research Fellow with Mater Research. Dr Franklin has a firm commitment to improving mental health and quality of life for adults with an intellectual disability through her research and clinical practice.

People with intellectual or developmental disabilities often have a higher burden of complex health issues and have a shorter life expectancy than the general population. Their poorer health outcomes are exacerbated due to barriers to accessing healthcare including challenges with the

capacity of health professionals to communicate effectively.

Dr Franklin's research expertise includes understanding the biological underpinnings of co-occurring conditions and how to improve healthcare delivery to this population. Dr Franklin has an interest in Down Syndrome and, specifically, investigating regression and catatonia. She is leading a large project to develop and evaluate training for hospital workers on working with people with intellectual disabilities and those on the autism spectrum.

Dr Franklin and her team were recently awarded a \$1.5m NHMRC Targeted Call for Research grant to conduct a cluster randomised controlled trial entitled "Bridge to Better Health". This project will develop a suite of resources to support General

Practice Nurses to play a larger role in the healthcare and delivery of health assessments for people with intellectual disabilities.

The project specifically will utilise the Comprehensive Health Assessment Program (CHAP) for annual health assessments, a tool the team developed in the early 2000s. The aim of Bridge to Better Health is to show how targeted practical intervention improves primary health outcomes of people with intellectual disabilities, reduces their need to be hospitalised and saves money for the healthcare system.

"My team and I were recently awarded a \$1.5m NHMRC Targeted Call for Research grant to conduct a cluster randomised controlled trial entitled 'Bridge to Better Health'."

– Dr Cathy Franklin

Mother and Baby Program

This program is focused on optimising the care of women and their babies during pregnancy and following delivery. Ongoing research activity is directed toward improving the clinical management of complications before, during and after pregnancy, optimising the care for premature and unwell neonates, and examining the relationship between fetal development, early life experience and life-long health. This program is home to the prestigious NHMRC-funded Stillbirth Centre of Research Excellence. It also supports the Queensland Family Cohort Study, a landmark research project to track health across Queensland families.

Program Leads:



Professor Vicki Flenady
(Biomedical)



Professor Helen Liley
(Clinical)

Group Leaders:



Professor Vicki Flenady
Centre of Research Excellence in Stillbirth



Professor Helen Liley
Critical Care of At Risk Newborns Research



Dr Sandy Richardson
Developmental Molecular Genetics Group



Professor Sailesh Kumar
Genesis Maternal Fetal Medicine Research



Associate Professor Kym Rae
Indigenous Health Research



Professor Vicki Clifton
Pregnancy and Development Research



Research Highlight: Mother and Baby Program Professor Sailesh Kumar

Professor Sailesh Kumar is a Maternal and Fetal Medicine specialist at Mater Mothers' Hospital and Mayne Professor of Obstetrics & Gynaecology at The University of Queensland.

His area of research interest is in fetal imaging, placental biomarkers and the prediction of adverse perinatal outcomes. His team's vision is to identify reliably infants at-risk of stillbirth and other complications caused by labour delivery in a cost-effective and timely manner thus allowing tailored pregnancy management and appropriate timing of birth. Their focus is on the commonest cause of antepartum stillbirth – placental dysfunction and suboptimal fetal growth.

His team identified that an abnormal cerebroplacental ratio (reflects of fetal circulation), which can be measured by ultrasound during pregnancy, before labour commences is an indicator of poor placental function,

thus enabling recognition of infants at risk of fetal compromise in labour.

This showed that an abnormal cerebroplacental ratio was highly correlated with levels of a key biomarker of placental function (PIGF) thus elucidating the relationship between subtle fetal circulatory changes and placental dysfunction in apparently normal fetuses. Prof Kumar holds an NHMRC Investigator Fellowship and leads a MRFF funded multicentre RCT evaluating a novel treatment for the prevention of intrapartum fetal compromise.

Prof Kumar is currently leading two large (~4,000 women) randomised clinical trials (ACTRN12621000354886 and ACTRN12621000231842) aiming to improve outcomes for women and babies.

In Australia, almost 1 in 4 caesarean sections are performed for suspected fetal distress, which occurs when the placenta is unable to supply

sufficient oxygen and nutrients in labour. The only therapeutic options are emergency caesarean section or instrumental vaginal birth – both of which can have serious consequences. Sildenafil Citrate (Viagra®) dilates blood vessels, thus improving blood flow to the baby. Prof Kumar's trials evaluate the potential of Viagra® to improve perinatal outcomes by reducing fetal distress during labour.

As part of these trials, ultrasound data and maternal plasma are collected for analysis. The logistics of sample collection and data transfer have been streamlined and one trial (which plans to recruit 3,200 women to potentially benefit from this new treatment approach) is projected to complete recruitment within 26 months of commencing. Processes for storage of maternal and placental samples are well established with adequate freezer space and dedicated sample tracking and management system at Mater Research.

"Our team's vision is to reliably identify infants at-risk of stillbirth and other complications caused by labour delivery in a cost-effective and timely manner..."

– Professor Sailesh Kumar

Neuroscience Program

This program focuses on the genetics and pathophysiology of diseases of the brain and nervous system and seeks to improve the life-long management across the spectrum of neurological disease, intellectual disability and mental health conditions. A strategic partnership with The University of Queensland's Queensland Brain Institute provides a nexus to world-class research calibre (people, technology, infrastructure).

Program Leads:



Dr Dhanisha Jhaveri
(Biomedical)



Dr Lisa Gillinder
(Clinical)

Group Leaders:



Associate Professor
Jake Gratten
Cognitive Health
Genomics



Professor Peter Nestor
Cognitive Neurology



Associate Professor
Paul Dawson
Neurodevelopmental
Research



Dr Lisa Gillinder
Epilepsy Research



Professor Aileen
McGonigal
Epilepsy, Rhythms and
Behaviour Research



Professor
Geoffrey Faulkner
Genome Plasticity and
Disease Research



Dr Carlie Cullen
Glial Neurobiology, Cognition
and Behaviour Research



Dr Andrew Swayne
Neuroimmunology Research



Dr Dhanisha Jhaveri
Neural Stem Cell
Biology Research



Research Highlight: Neuroscience Program Professor Geoff Faulkner

Professor Geoff Faulkner is a Professorial Research Fellow, jointly appointed at Mater Research and the Queensland Brain Institute (QBI). Prof Faulkner leads the Genome Plasticity and Disease Research Group at Mater with a team of 20 researchers. He is a computational and molecular biologist with research interests in transposable elements, genomics and neuroscience.

Prof Faulkner's group seeks to understand the role of a type of DNA jumping gene called L1 in causing genetic variation between neurons within an individual brain. This variation may be a fundamental aspect of healthy brain function but it also appears to change in neurological diseases, including Rett syndrome, Parkinson's Disease and schizophrenia. Prof Faulkner's most important work has shown that endogenous mobile DNA that changes their position (retrotranspose)

causes somatic genome mosaicism in the human brain. Genetic mosaicism is defined as the presence of two or more cell lineages with different genotypes arising from a single fertilised egg in a single individual. Somatic genome mosaicism is restricted to non-germ cell tissue. This is a novel source of molecular diversity in neurons that may impact how the brain functions.

Prof Faulkner's group are looking to find the root causes of Parkinson's Disease, seeking an explanation for why certain brain cells die in this progressive neurodegenerative disorder. The objective is to better understand how mobile DNA causes or indicates brain cells dying in the early stages of the disease, following on from strong data suggesting mobile DNA is unusually active in pre-clinical models of Parkinson's Disease.

Prof Faulkner's work on mobile DNA retrotransposition in cancer, may help to understand the molecular

processes underpinning various cancers, as well as early development, with a focus on how mobile DNA activity may cause miscarriage or reduce female fertility with age.

Prof Faulkner is working with clinicians locally and overseas to apply nanopore sequencing to study a range of biomedical research questions. These projects have included a collaboration with the Mater David Serisier Respiratory Biobank, funded by the Mater Foundation and Cancer Australia, to analyse mobile DNA in lung cancers. Lung cancer is the fifth most prevalent cancer in Australia, with only 17 per cent of patients surviving more than five years post-diagnosis. This study aims to greatly improve explanations for how normal lung cells transform into cancer cells and develop personalised tools to predict and detect patient relapse.

"We are studying the root causes of Parkinson's Disease, seeking an explanation for why certain brain cells die in this progressive neurodegenerative disorder."

– Professor Geoff Faulkner



Catherine's House for Mothers, Babies and Families

A landmark project is underway at Mater to deliver Australia's first integrated perinatal mental health service of its kind. Catherine's House for Mothers, Babies and Families will provide evidence-based in-patient and day programs to meet the significant need for mental health services for Queensland parents during pregnancy and in the first year of their baby's life.

Located alongside Mater Mothers' Hospital, Catherine's House will complement and integrate with the existing neonatal, paediatric, pregnancy and maternity services while delivering tailored mental healthcare led by a multidisciplinary team of psychiatrists, psychologists and allied health professionals.

More than \$17 million in generous community donations to Mater Foundation has enabled the former convent to be renovated into a fit-for-purpose, contemporary perinatal health centre with 10 in-patient beds and a range of out-patient services.

This exciting project is expected to be open in early 2023 and is designed to be a safe haven where families can stay together during treatment and where mothers and families can recover and connect.

Named in honour of Catherine McAuley, the founding Sister of



Mercy, the centre will enable Mater to continue to achieve its Mission to meet unmet community needs. More than 60,000 babies are born every year in Queensland, but there are currently only four dedicated public hospital beds for women needing perinatal mental healthcare.

Catherine's House for Mothers, Babies and Families will triple the number of in-patient hospital beds for Queensland families experiencing mental health issues in the first year of having their baby.

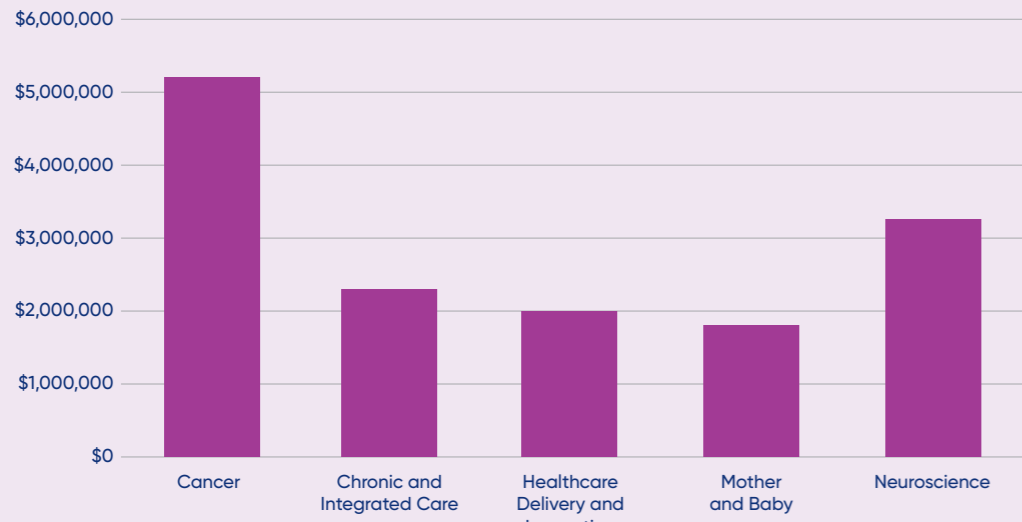
Led by an experienced team of multidisciplinary healthcare professionals, in-patient care and outpatient programs delivered at Catherine's House will be evidence-based on the latest findings from Mater Research on the needs of new and expecting parents.

Dr Beth Mah has recently been appointed as the Director of Catherine's House for Mothers, Babies and Families. Dr Mah is a Perinatal and Infant Psychiatrist with an interest in trans generational trauma and Indigenous mental health. Her post includes protected time for research.

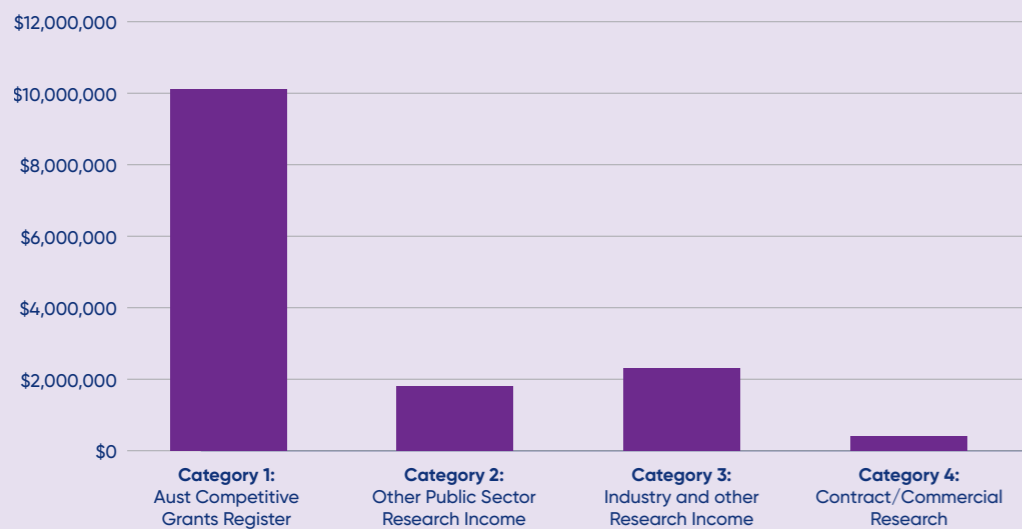
Dr Mah is passionate about Infant mental health, both as a clinician and a researcher, especially with regards to Indigenous mother and baby health. Dr Mah has published over 10 journal articles and has been the successful recipient of research grant funding. We are delighted to welcome Dr Mah to Mater and look forward to her working with the Mother and Baby Program at Mater Research as part of her clinical researcher role, when she starts on-site in 2023.

Grant Successes 2022

Grant funding by research program



Grant funding by research income category



Total funding
\$14.8m

23
 Number of grants

Grant Successes 2022

2022 Grant Successes (Lead Investigator only)

Australian Research Council

Prof Vicki Clifton, Discovery Project, Glucocorticoid receptor-αD1 modulates stress and inflammation.

\$478,327

National Health and Medical Research Council

Prof Katharina Ronacher, Ideas Grant, Oxidised Cholesterols as Key Regulators of Host Immunity to Tuberculosis

\$1,515,177

A/Prof Paul Dawson, Ideas Grant, Neuroprotective benefit and safety of preterm neonatal sulphate supplementation

\$966,907

A/Prof Jake Gratten, Investigator Grant, Towards improved clinical outcomes in common brain disorders using large-scale statistical genomics

\$2,356,790

Dr Cathy Franklin, NHMRC Targeted Call for Research into Improving Health of People Intellectual Disability. Bridge to Better Health: A Cluster Randomised Controlled Trial for Capacity Building in Intellectual Disability Health for General Practice

\$1,497,939

Medical Research Futures Fund

Prof Maher Gandhi, Clinical Trials – Rare Cancers, Rare Diseases and Unmet Need Grants (RCRDUN), An Open label, Multicentre, Phase I study of front-line TheRapy for EBV-associated Lymphomas – 2: TREBL-2

\$2,844,745

Prof Josephine Forbes, MRFF Targeted Translation Research Accelerator (TTRA) for Diabetes and Cardiovascular Disease, 1F – Targeting energy deficiency in diabetic kidney disease using sonlicromanol

\$234,375

Prof Josephine Forbes, MRFF Targeted Translation Research Accelerator (TTRA) for Diabetes and Cardiovascular Disease, 3E – Targeting the Receptor for Advanced Glycation End-products (RAGE) to reduce beta cell damage at the onset of type 1 diabetes

\$250,000

Australian Government – Department of Health

Prof Vicki Flenady, Federal Department of Health Targeted Tender, Reducing Stillbirth: Stillbirth Education and Awareness

\$1,251,726

Cancer Australia

Dr Joshua Tobin, Priority Driven Young Investigator Project Grant (pdCCRS), The Role of Lipids in the Immune Fitness of Malignant B cells, Intratumoral T cells and CAR-T cells in Follicular Lymphoma.

\$100,000

Dr Jithendra Gunawardana, Priority Driven Young Investigator Project Grant (pdCCRS), Harnessing the tumour microenvironment to stratify and treat nodular lymphocyte predominant Hodgkin Lymphoma.

\$200,000

Overseas Agencies

Dr Kavita Bisht, American Society of Haematology, Global Research Award.

\$149,456

Dr John Hooper, United States of America Department of Defense, US DoD CDMRP (Congressionally Directed Medical Research Programs) Grant.

USD \$520,011 / AUD \$746,471

Industry, Government, and other funding

Dr Cathy Franklin, Autism CRC Ltd, Autism CRC National Guidelines: Update and Capacity Building

\$492,615

A/Prof Jake Begun, Gutsy Group, Understanding the function of OTUD3, a novel ulcerative colitis gene

\$150,000

Prof Brian Gabrielli, Ovarian Cancer Research Fund, Targeting replication stress to improve immune recognition and reduce immunosuppressive in the tumour microenvironment

\$500,486

Prof Allison Pettit, The Commonwealth Serum Laboratories (CSL) Ltd, Protecting hematopoietic stem cell (HSC) niches during HSC transplantation through enhancing bone marrow macrophage regenerative mechanisms.

\$421,100

Industry, Government, and other funding

Prof John Hooper, Pheon Therapeutics Ltd, CDCP1 with Pheon Therapeutics Ltd.

\$352,495

Prof John Hooper, The Royal Australian and New Zealand College for Radiologists. Theranostic polyclonal antibodies for the detection and treatment of ovarian cancer.

\$38,950

Prof John Hooper, Tour de Cure, It glows, it goes – a targeted contrast agent for fluorescence guided ovarian cancer surgery.

\$100,000

Ms Siobhan Loughnan, Stillbirth Foundation Australia, Caring for the Carers: Supporting the wellbeing of health professionals caring for parents following perinatal loss.

\$34,162

The University of Queensland

Prof Katharina Ronacher, The University of Queensland, Australian Infectious Diseases Centre – Project Seed Funding. Preclinical Validation of a Novel Therapy for the Treatment of Severe SARS-CoV-2.

\$50,000

Translational Research Institute

Dr Taylan Gurgenci/ Dr Md Moniruzzaman (Mater Research), TRI LINC Grant. Medicinal cannabis, inflammation, and symptoms in advanced cancer (Cann-Inflam).

\$49,988

Awards list in full

External Awards

Bionics Queensland Prizes

Prof Aileen McGonigal, Bionics Qld, Investigating neurobiological and physiological changes of stress in epilepsy: towards personalized detection and management

CSL Florey Next Generation Award

Dr Chloe Yap

Women in Technology Award

A/Prof Kym Rae - Inspiring Diversity in STEM category

Dr Julie Cichero - Community Impact Award (highly commended in 2021, winner in 2022)

UniQuest Commercialisation Impact Award

A/Prof Sumaira Hasnain

The University of Queensland Faculty of Medicine Research Week – Best Presentation by HDR Student

Dr Chloe Yap

The University of Queensland Faculty of Medicine Research Week – Best Presentation by a Mid-Career Researcher

Dr Andrew Swayne

The University of Queensland Faculty of Medicine Research Week – Best Presentation (People's Choice Award)

Dr Christine Andrews

The University of Queensland Faculty of Medicine Excellence Awards – Collaborators of the Year Award

A/Prof Jake Gratten with the MRI-UQ Autism Research Core Collaborative

The University of Queensland Faculty of Medicine Excellence Awards – Spirit of Recognition Award

A/Prof Kym Rae

The University of Queensland Faculty of Medicine Valedictorian

Dr Chloe Yap

The University of Queensland Faculty of Medicine Excellence Awards – Service Excellence Award

The Mater Research Equity, Diversity and Inclusion Committee (Highly Commended Finalist)

2022 OneTRI Awards

Dr Kavita Bisht (Stem Cell Biology Group) and Dr Ran Wang (Stem Cells and Cancer Research Group) as members of the TRI EMCR Committee

Prof Kristen Radford was recognised through two awards:

- For establishing the only humanised mouse facility in Australia and sharing research innovations generously to benefit science as a whole.
- As one of the first five graduates of TRI's Translational Pathways program

TRI Top 10 Translational Achievements

A/Prof Paul Dawson (Neurodevelopmental Research Group) and colleagues, with the support of Dr Elizabeth Hurrión (Mater Senior Staff Specialist Neonatologist) for demonstrating the importance of sulphate in neonatal brain development. The research led to a world-first test for serum sulphate now available for routine clinical use and an ongoing multisite clinical cohort study designed to provide evidence of whether neonatal sulphate deficiency contributes to poor neurodevelopment outcomes for premature babies.

A/Prof Ingrid Winkler (Stem Cells and Cancer Research) along with industry partner GlycoMimetics for development of Uproleselan, which is in Phase 3 clinical trials for the treatment of acute myeloid leukaemia.

Prof Maher Gandhi (Blood Cancer Research Group) and Dr Colm Keane (UQ-Frazer) for ground-breaking discoveries in the immuno-biology of viral and non-viral-associated lymphomas, which led to a new treatment for these lymphomas that has been successfully used and is currently being further evaluated in national clinical trials.

Internal Awards

Betty McGrath Seeding Grants – Healthcare Delivery & Innovation

Dr Anne Leditschke – “Inspiring Beyond ICU” – A multi-centre randomised controlled trial of inspiratory muscle training in intensive care patients mechanically ventilated for more than five days

Prof Vicki Clifton – A sustainable and cultural approach to asthma care for Indigenous Australian women: Aboriginal and Torres Strait Islander Antenatal Asthma Management Service (AAAMS)

Dr Jennifer Utter – Supporting healthcare staff to share meals with family, friends or colleagues to improve nutritional and emotional wellbeing

Dr Reuben Beer – Advanced imaging in multiple sclerosis: Utilising multimodal magnetic resonance imaging to model response before and after highly active disease modifying therapy

Betty McGrath Education Seeding Grant

Mr. Rohan Bates – Measuring the Emotional Responses and Self – Regulation skills of Learners in Problem Based Learning Simulations

Dr Laurence Catley Clinical Student Prize

Ms Aleysha Martin

Early Career Researcher Prize

Dr Christine Andrews

Early Career Researcher Seeding Grants

Dr Natasha Jansz
Dr Grace Branjerdporn

Higher Degree Research Biomedical Prize

Ms Jennifer Stables

Dr David Serisier Student Training Award

Jennifer Stables

Publication Recognition Scheme

A/Prof Jake Begun
Prof Katharina Ronacher
Dr Yong Sheng
Dr Grace Branjerdporn
Ms Sally McCray
Mr Cheng Xiang Foo
Prof Janet Hardy
Prof Josephine Forbes

Sisters of Mercy Medals

Ms. Megan Martin – The Sister Madonna Josey Medal

Prof Kristen Radford – The Sister Michaelleen Ahern Medal

A/Prof Jake Gratten – The Sister Regis Mary Dunne Medal

Prof Lewis Perrin – The Sister Eileen Pollard Medal

Strategic Grant for Outstanding Women

Dr Elizabeth Martin
Dr Jodi Saunus

Mater People Awards

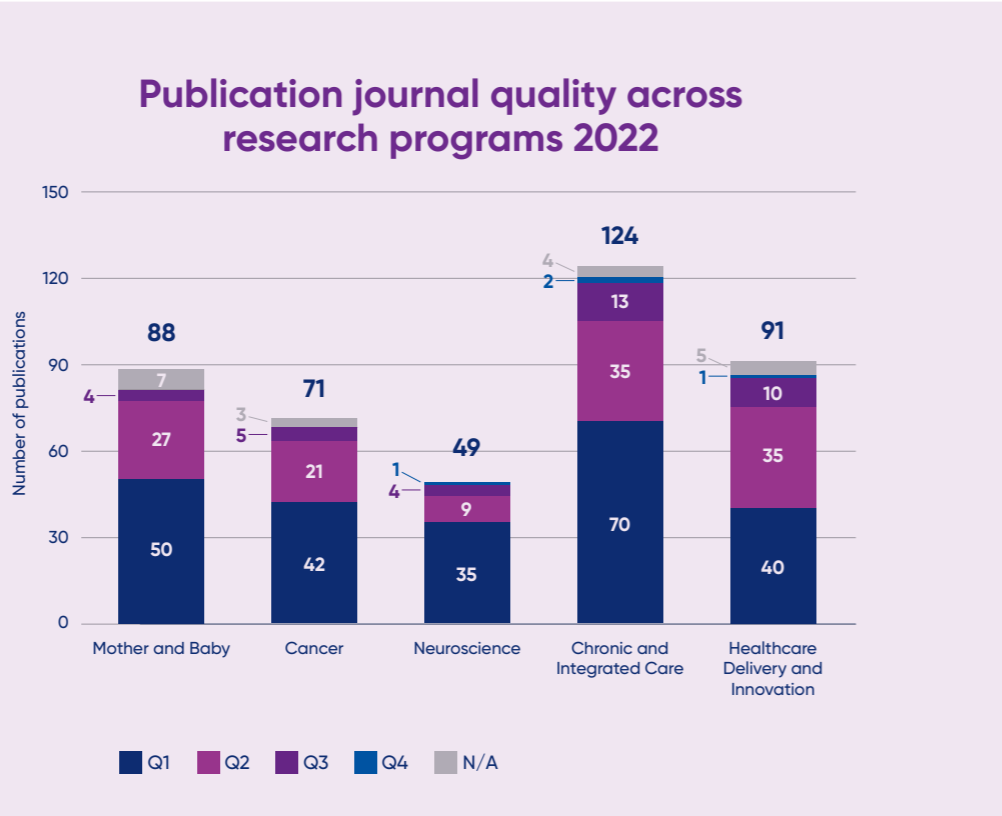
Centre of Research Excellence in Stillbirth Team - Mater Research Excellence Award

Dr Caroline Nicholson - Mater Innovator of the Year Award

Publication information

423 

Total number of Publications



Source: Mater Research EndNote Library – Last import conducted on 03 January 2023. Please note: epub dates for publications during 1 January - 31 December 2022 have been used. Program allocation is based on first author/corresponding author Program affiliation. Where the author name is unfamiliar, the title/abstract of the publication has been used for Program allocation.

Notes: N/A denotes that the journal is not currently ranked by SCImago (Scopus Data) or could not be found in the SCImago database. Field-weighted Quartiles are derived from the SCImago Journal Rank (SJR) (scientific influence) of a publication. These 'best quartiles' are assigned based on the published research alignment with the subject area of a journal.

Outstanding Mater Research Achievements in 2022

Grant Funding Awarded

Total funding 
\$14.8m

23 
Number of grants

Knowledge Gain

New clinical studies

57 
Clinical trials

 24
Cohort studies
Giving patients access to novel drugs and treatments.

Publications

423 
Total number of Publications

237 
Top tier journals

Education

109 
Current HDR students

26 
Degrees conferred

Publications list in full

Citations

Citations added to the Endnote database from 1 January – 31 December 2022. Publications from all five programs have been combined together in one list. Publications have been arranged in alphabetical order by first author's last name.

- Abberton, K.M., et al., *Identification and Re-consent of Existing Cord Blood Donors for Creation of Induced Pluripotent Stem Cell Lines for Potential Clinical Applications*. Stem Cells Transl Med, 2022. 11(10): p. 1052-1060.
- Alexander, K.A., et al., *Lymphocytes Are Not Required for Neurogenic Heterotopic Ossification Development after Spinal Cord Injury*. Neurotrauma Rep, 2022. 3(1): p. 87-96.
- Alharthi, S., et al., *Formulation and Biological Evaluation of Mesoporous Silica Nanoparticles Loaded with Combinations of Sortase A Inhibitors and Antimicrobial Peptides*. Pharmaceutics, 2022. 14(5).
- Ali, S., et al., *The association between diabetes mellitus and risk of pancreatic cancer: an Australian national data-linkage study in women*. Cancer Epidemiol, 2022. 81: p. 102266.
- Allen, J., et al., *Is a randomized controlled trial of waterbirth possible? An Australian feasibility study*. Birth, 2022.
- Altemani, F., et al., *Reduced Abundance of Nitrate-Reducing Bacteria in the Oral Microbiota of Women with Future Preeclampsia*. Nutrients, 2022. 14(6).
- Alwash, S.M., et al., *Triceps skinfold thickness and body mass index and the risk of gestational diabetes mellitus: Evidence from a multigenerational cohort study*. Obes Res Clin Pract, 2022. 16(1): p. 44-49.
- Amarasena, L., et al., *Offshore detention: cross-sectional analysis of the health of children and young people seeking asylum in Australia*. Arch Dis Child, 2022.
- Amarasena, S., et al., *Differences in the pattern and cost of hospital care between Indigenous and non-Indigenous Australians with cirrhosis: an exploratory study*. Intern Med J, 2022.
- Ambeskovic, M., et al., *Elemental analysis of hair provides biomarkers of maternal hardship linked to adverse behavioural outcomes in 4-year-old children: The QF2011 Queensland Flood Study*. J Trace Elem Med Biol, 2022. 73: p. 127036.
- Andersen, L.M. and P. Yuide, *Replacing plastic bread clips with cardboard will prevent bowel perforation*. ANZ J Surg, 2022.
- Anderson, E., et al., *WT1 complete gonadal dysgenesis with membranoproliferative glomerulonephritis: case series and literature review*. Pediatr Nephrol, 2022.
- Anderson, L.A., et al., *A Comparison of the Timing of Hand Expressing of Human Milk with Breast Massage to Standard Care for Mothers of Preterm Infants: An Exploratory Pilot Using a Randomized Controlled Design*. J Hum Lact, 2022: p. 8903344221088789.
- Anderson, L.A., et al., *Midwives experiences of interventions to improve breast expression following preterm birth: A qualitative study*. Midwifery, 2022. 116: p. 103530.
- Aouira, N., et al., *Practitioners' Perspective on Metabolic Monitoring of Second-Generation Antipsychotics: Existing Gaps in Knowledge, Barriers to Monitoring, and Strategies*. J Child Adolesc Psychopharmacol, 2022. 32(5): p. 296-303.
- Atcheson, R.J., T.H.J. Burne, and P.A. Dawson, *Serum sulfate level and Slc13a1 mRNA expression remain unaltered in a mouse model of moderate vitamin D deficiency*. Mol Cell Biochem, 2022.
- Atkins, B., et al., *Is care of stillborn babies and their parents respectful? Results from an international online survey*. Bjog, 2022.
- Baade, P.D., et al., *A prognostic survival model for women diagnosed with invasive breast cancer in Queensland, Australia*. Breast Cancer Res Treat, 2022. 195(2): p. 191-200.
- Baguley, B.J., et al., *Mediterranean Style Dietary Pattern with High Intensity Interval Training in Men with Prostate Cancer Treated with Androgen Deprivation Therapy: A Pilot Randomised Control Trial*. Int J Environ Res Public Health, 2022. 19(9).
- Bakbakh, D., et al., *Protocol for the development of a core outcome set for stillbirth care research (iCHOOSE Study)*. BMJ Open, 2022. 12(2): p. e056629.
- Barnett, A., et al., *Thoracic Society of Australia and New Zealand Position Statement on Acute Oxygen Use in Adults: 'Swimming between the flags'*. Respirology, 2022. 27(4): p. 262-276.
- Batty, K., et al., *Metastatic primary breast neuroendocrine neoplasms: a case series*. Intern Med J, 2022.
- Baumann-Birkbeck, L., et al., *Learner attitudes towards a virtual microbiology simulation for pharmacy student education*. Curr Pharm Teach Learn, 2022. 14(1): p. 13-22.
- Beck, S., et al., *From Other Journals February 2022*. Emerg Med Australas, 2022. 34(1): p. 141-143.
- Beck, S., et al., *From Other Journals June 2022*. Emerg Med Australas, 2022. 34(3): p. 475-477.
- Beetham, K.S., et al., *Longitudinal association of physical activity during pregnancy with maternal and infant outcomes: Findings from the Australian longitudinal study of women's health*. Womens Health (Lond), 2022. 18: p. 17455057221142357.
- Begum, H., et al., *Surveillance for severe influenza and COVID-19 in patients admitted to sentinel Australian hospitals in 2020: the Influenza Complications Alert Network (FluCAN)*. Commun Dis Intell (2018), 2022. 46.
- Berkhout, A., et al., *Epidemiology and long-term neurological sequelae of childhood herpes simplex CNS infection*. J Paediatr Child Health, 2022.
- Billon, V., et al., *Somatic retrotransposition in the developing rhesus macaque brain*. Genome Res, 2022.
- Bissett, B.M., et al., *Does mechanical threshold inspiratory muscle training promote recovery and improve outcomes in patients who are ventilator-dependent in the intensive care unit? The IMPROVE randomised trial*. Aust Crit Care, 2022.
- Biswas, T., et al., *Prevalence of multiple non-communicable diseases risk factors among adolescents in 140 countries: A population-based study*. EClinicalMedicine, 2022. 52: p. 101591.
- Bivol, S., et al., *Australian Parkinson's Genetics Study (APGS): pilot (n=1532)*. BMJ Open, 2022. 12(2): p. e052032.
- Bliesner, A., et al., *Impact of Food-Based Weight Loss Interventions on Gut Microbiome in Individuals with Obesity: A Systematic Review*. Nutrients, 2022. 14(9).
- Bonazzi, V.F., et al., *Patient-derived xenograft models capture genomic heterogeneity in endometrial cancer*. Genome Med, 2022. 14(1): p. 3.
- Bong, A.H.L., et al., *AKT Regulation of ORAI1-Mediated Calcium Influx in Breast Cancer Cells*. Cancers (Basel), 2022. 14(19).
- Bosworth, R., et al., *HIV/AIDS, hepatitis and tuberculosis-related mortality among incarcerated people: a global scoping review*. Int J Prison Health, 2022. 18(1): p. 66-82.
- Botto, J.M. and G.J. Faulkner, *Endogenous retrovirus expression during fruitfly metamorphosis enhances adult viral immunity*. Nat Genet, 2022.
- Boyle, F.M., et al., *Perinatal bereavement care during COVID-19 in Australian maternity settings*. J Perinat Med, 2022.
- Bradford, B.M., et al., *Microglia deficiency accelerates prion disease but does not enhance prion accumulation in the brain*. Glia, 2022. 70(11): p. 2169-2187.
- Branjerdporn, G., et al., *Evaluation of an Inpatient Psychiatric Mother-Baby Unit Using a Patient Reported Experience and Outcome Measure*. Int J Environ Res Public Health, 2022. 19(9).
- Branjerdporn, G., et al., *Infant Developmental Outcomes: Influence of Prenatal Maternal-Fetal Attachment, Adult Attachment, Maternal Well-Being, and Perinatal Loss*. Int J Environ Res Public Health, 2022. 19(4).
- Branjerdporn, G., et al., *Uncovering the Model and Philosophy of Care of a Psychiatric Inpatient Mother-Baby Unit in a Qualitative Study with Staff*. Int J Environ Res Public Health, 2022. 19(15).
- Bratkovic, D., et al., *PTC923 (sepiapterin) lowers elevated blood phenylalanine in subjects with phenylketonuria: a phase 2 randomized, multi-center, three-period crossover, open-label, active controlled, all-comers study*. Metabolism: Clinical and Experimental, 2022. 128: p. 155116.
- Brown, C., et al., *Partnering with support persons and clinicians to improve the health care experiences of patients with cirrhosis*. J Clin Nurs, 2022.
- Brown, R.C., et al., *Effectiveness of exercise via telehealth for chronic disease: a systematic review and meta-analysis of exercise interventions delivered via videoconferencing*. Br J Sports Med, 2022.
- Brunelli, V.N., M.A. Ramis, and K. Kynoch, *Roles and practices of specialist lung cancer nurses: a scoping review protocol*. JBI Evid Synth, 2022.
- Burgess, B., et al., *Diagnosis and Management of a Chronic Lower-Limb Wound in a Patient with Feltz Syndrome*. Adv Skin Wound Care, 2022. 35(7): p. 1-4.
- Burnard, D., et al., *Clinical Burkholderia pseudomallei isolates from north Queensland carry diverse bimABm genes that are associated with central nervous system disease and are phylogenomically distinct from other Australian strains*. PLoS Negl Trop Dis, 2022. 16(6): p. e0009482.
- Burr, L.D., et al., *Assessment of Long-Term Macrolide Exposure on the Oropharyngeal Microbiome and Macrolide Resistance in Healthy Adults and Consequences for Onward Transmission of Resistance*. Antimicrob Agents Chemother, 2022. 66(4): p. e0224621.
- C, O.S., E. Wilson, and M. Beckmann, *Five-year trends in induction of labour in a large Australian metropolitan maternity service*. Aust N Z J Obstet Gynaecol, 2022.

51. Cadilhac, D.A., et al., *Effect of the Coronavirus Disease 2019 Pandemic on the Quality of Stroke Care in Stroke Units and Alternative Wards: A National Comparative Analysis*. *J Stroke*, 2022. 24(1): p. 79-87.
52. Callander, E.J., et al., *Safer Baby Bundle: study protocol for the economic evaluation of a quality improvement initiative to reduce stillbirths*. *BMJ Open*, 2022. 12(8): p. e058988.
53. Calleja, Z., J. Job, and C. Jackson, *Offsite primary care providers using telehealth to support a sustainable workforce in rural and remote general practice: A rapid review of the literature*. *Aust J Rural Health*, 2022.
54. Canivet, C.M., et al., *Validation of the new 2021 EASL algorithm for the noninvasive diagnosis of advanced fibrosis in NAFLD*. *Hepatology*, 2022.
55. Cao, P., et al., *Enhanced Mucosal Transport of Polysaccharide-Calcium Phosphate Nanocomposites for Oral Vaccination*. *ACS Appl Bio Mater*, 2021. 4(11): p. 7865-7878.
56. Carter, A., et al., *Interventions to reduce suicidal thoughts and behaviours among people in contact with the criminal justice system: A global systematic review*. *EClinicalMedicine*, 2022. 44: p. 101266.
57. Casciello, F., et al., *Combined Inhibition of G9a and EZH2 Suppresses Tumor Growth via Synergistic Induction of IL24-Mediated Apoptosis*. *Cancer Res*, 2022. 82(7): p. 1208-1221.
58. Casey, M., et al., *Inhibition of CD39 unleashes macrophage antibody-dependent cellular phagocytosis against B-cell lymphoma*. *Leukemia*, 2022.
59. Chan, H.W., et al., *Cohort profile: a prospective Australian cohort study of women's reproductive characteristics and risk of chronic disease from menarche to premenopause (M-PreM)*. *BMJ Open*, 2022. 12(10): p. e064333.
60. Cheetham, S.W., M. Kindlova, and A.D. Ewing, *Methylartist: Tools for Visualising Modified Bases from Nanopore Sequence Data*. *Bioinformatics*, 2022. 38(11): p. 3109-12.
61. Cheng, A.C., et al., *Influenza epidemiology in patients admitted to sentinel Australian hospitals in 2019: the Influenza Complications Alert Network (FluCAN)*. *Commun Dis Intell* (2018), 2022. 46.
62. Cheon, J.H., et al., *The impact of clinical experience on decision-making regarding the treatment and management of mild-to-moderate ulcerative colitis*. *Intest Res*, 2022.
63. Chung, J., et al., *Elbow to digit measurements as a preoperative adjunct tool to aid intramedullary femoral nail selection - the rule of thumb*. *Injury*, 2022.
64. Chuter, V., et al., *Australian guideline on diagnosis and management of peripheral artery disease: part of the 2021 Australian evidence-based guidelines for diabetes-related foot disease*. *J Foot Ankle Res*, 2022. 15(1): p. 51.
65. Clark, P.J., et al., *Hepatitis C treatment outcomes for Australian First Nations Peoples: equivalent SVR rate but higher rates of loss to follow-up*. *BMC Gastroenterol*, 2022. 22(1): p. 339.
66. Clark, P.J., et al., *Liver Disease and Poor Adherence Limit Hepatitis C Cure: A Real-World Australian Treatment Cohort*. *Dig Dis Sci*, 2022.
67. Clarke, L., et al., *Response to treatment in NMOSD: the Australasian experience*. *Mult Scler Relat Disord*, 2022. 58: p. 103408.
68. Clarke, T., F.E. Fernandez, and P.A. Dawson, *Sulfation Pathways During Neurodevelopment*. *Front Mol Biosci*, 2022. 9: p. 866196.
69. Clifton, V.L., et al., *Associations between COVID-19 lockdown and post-lockdown on the mental health of pregnant women, postpartum women and their partners from the Queensland family cohort prospective study*. *BMC Pregnancy Childbirth*, 2022. 22(1): p. 468.
70. Clifton, V.L., et al., *Response to Letter to the Editor 'Adverse perinatal outcomes in the Australian Indigenous population, the role of asthma'*. *Aust N Z J Obstet Gynaecol*, 2022. 62(2): p. E4-e5.
71. Cox, E.G., et al., *A survey on the use of rugs in Australian horses*. *Aust Vet J*, 2022.
72. Cripps, E.K., P.A. Dargaville, and N.E. Spotswood, *EBNEO commentary: Outcomes following preterm birth: What we think and what is real*. *Acta Paediatr*, 2022.
73. Crispin, P., et al., *A review of electronic medical records and safe transfusion practice for guideline development*. *Vox Sang*, 2022.
74. Crowel, F., et al., *Rectally Administrated Thioguanine for Distal Ulcerative Colitis: A Multicenter Case Series*. *Inflamm Bowel Dis*, 2022.
75. Dall'Asta, A., et al., *Present and future of ultrasound in labor*. *Am J Obstet Gynecol MFM*, 2022. 4(4): p. 100629.
76. Daly, T., et al., *Wide-field radiation therapy for skin cancerisation - Have we forgotten what we learned?* *J Med Imaging Radiat Oncol*, 2022.
77. Danks, M., et al., *'Low-normal' motor skills in infants at high risk for poor developmental outcomes: A prevalence and prognostic study*. *Dev Med Child Neurol*, 2022.
78. Das, S., et al., *Trend of maternal education in Bangladesh from 2004-2018: Analysis of demographic surveillance data*. *PLoS One*, 2022. 17(1): p. e0255845.
79. de Alwis, N., et al., *Placental OLAH Levels Are Altered in Fetal Growth Restriction, Preeclampsia and Models of Placental Dysfunction*. *Antioxidants (Basel)*, 2022. 11(9).
80. de Barros Medeiros, P., et al., *Current approach and attitudes toward neonatal near-miss and perinatal audits: An exploratory international survey*. *Aust N Z J Obstet Gynaecol*, 2022.
81. De Bie, F.R., et al., *Sildenafil during the 2nd and 3rd Trimester of Pregnancy: Trials and Tribulations*. *Int J Environ Res Public Health*, 2022. 19(18).
82. de Bock, M., et al., *ISPAD Clinical Practice Consensus Guidelines 2022: Glycemic targets and glucose monitoring for children, adolescents, and young people with diabetes*. *Pediatr Diabetes*, 2022. 23(8): p. 1270-1276.
83. De Jersey, S., et al., *Outcomes from a hybrid implementation-effectiveness study of the living well during pregnancy Tele-coaching program for women at high risk of excessive gestational weight gain*. *BMC Health Serv Res*, 2022. 22(1): p. 589.
84. DeBortoli, E., et al., *Measurable outcomes of consumer engagement in health research: A scoping review*. *Front Public Health*, 2022. 10: p. 994547.
85. Dienel, G.A., et al., *Potential new roles for glycogen in epilepsy*. *Epilepsia*, 2022.
86. Dixon, B.J.W., et al., *The social predictors of paternal antenatal mental health and their associations with maternal mental health in the Queensland Family Cohort prospective study*. *Arch Womens Ment Health*, 2022.
87. Donnelly, P., et al., *Intracranial aneurysms: The era of endovascular intervention in Australia*. *J Clin Neurosci*, 2022. 97: p. 127-135.
88. Du, C., et al., *Advanced Glycation End Products and Inflammation in Type 1 Diabetes Development*. *Cells*, 2022. 11(21).
89. Dube, M., et al., *Effect of an Australian community-based caseload midwifery group practice service on maternal and neonatal outcomes for women from a refugee background*. *Women Birth*, 2022.
90. Edmed, S.L., et al., *Sleep and health-related quality of life in women following a cancer diagnosis: results from the Women's Wellness after Cancer Program in Australia*. *Support Care Cancer*, 2022. 30(12): p. 10243-10253.
91. Edwards, C., et al., *Relationship between placental elastography, maternal pre-pregnancy body mass index and gestational weight gain*. *Placenta*, 2022. 121: p. 1-6.
92. Edwards, C., et al., *Shear wave velocity measurement of the placenta is not limited by placental location*. *Placenta*, 2022. 131: p. 23-27.
93. Eggins, R., et al., *Supportive care needs and psychosocial outcomes of rural versus urban women with breast cancer*. *Psycho-Oncology*, 2022.
94. El Masri, H., et al., *Dynamics of Patient-Based Benefit-Risk Assessment of Medicines in Chronic Diseases: A Systematic Review*. *Patient Prefer Adherence*, 2022. 16: p. 2609-2637.
95. Elahi, Z., et al., *The Human Dendritic Cell Atlas: An Integrated Transcriptional Tool to Study Human Dendritic Cell Biology*. *J Immunol*, 2022.
96. Evans, T.G., et al., *Efficacy and safety of a universal influenza A vaccine (MVA-NP+M1) in adults when given after seasonal quadrivalent influenza vaccine immunisation (FLU009): a phase 2b, randomised, double-blind trial*. *Lancet Infect Dis*, 2022.
97. Ewais, T., et al., *Schwartz Rounds for Staff in an Australian Tertiary Hospital: Protocol for a Pilot Uncontrolled Trial*. *JMIR Res Protoc*, 2022. 11(4): p. e35083.
98. Faint, A. and A.J.M. Daveson, *Tattoo sarcoidosis presenting as abdominal allodynia*. *Med J Aust*, 2022. 217(1): p. 23.
99. Farrant, B., et al., *Prevalence, severity and impact of chronic pain among a representative cross-sectional study of New Zealand high school students*. *J Paediatr Child Health*, 2022.
100. Faulkner, G.J., *HUSH, retrotransposon RNA, you're NEXT to decay*. *Mol Cell*, 2022. 82(9): p. 1610-1612.
101. Faulkner, G.J., *Retrotransposons: still mobile in humans*. *Nat Rev Genet*, 2022. 23(8): p. 458-459.
102. Fawke, J., et al., *Suctioning of clear amniotic fluid at birth: A systematic review*. *Resusc Plus*, 2022. 12: p. 100298.
103. Fernandes, R.G. and G. Radford-Smith, *Editorial: is older-onset ulcerative colitis more severe or less aggressively managed?* *Aliment Pharmacol Ther*, 2022. 55(10): p. 1350-1351.
104. Flanagan, A., et al., *High incidence of inflammatory bowel disease in Northern Australia: a prospective community population-based Australian incidence study in the Mackay-Isaac-Whitsunday region*. *Intern Med J*, 2022.
105. Flavell, J., C. Franklin, and P.J. Nestor, *A Systematic Review of Fragile X-Associated Neuropsychiatric Disorders*. *J Neuropsychiatry Clin Neurosci*, 2022: p. appineuropsych21110282.
106. Flemming, N., et al., *Mitochondrial Dysfunction in Individuals with Diabetic Kidney Disease: A Systematic Review*. *Cells*, 2022. 11(16).
107. Foo, C.X., et al., *GPR183 antagonism reduces macrophage infiltration in influenza and SARS-CoV-2 infection*. *Eur Respir J*, 2022.
108. Foo, C.X., S. Bartlett, and K. Ronacher, *Oxysterols in the Immune Response to Bacterial and Viral Infections*. *Cells*, 2022. 11(2).
109. Forsyth, S., R. Alati, and S.A. Kinner, *Asthma-related mortality after release from prison: a retrospective data linkage study*. *J Asthma*, 2022: p. 1-7.
110. Fotheringham, A.K., et al., *Advanced Glycation End Products (AGEs) and Chronic Kidney Disease: Does the Modern Diet AGE the Kidney?* *Nutrients*, 2022. 14(13).
111. Franco, R.A.G., et al., *Inhibition of BMP signaling with LDN 193189 can influence bone marrow stromal cell fate but does not prevent hypertrophy during chondrogenesis*. *Stem Cell Reports*, 2022. 17(3): p. 616-632.
112. Frankel, A., et al., *Efficacy of laparoscopic fundoplication in patients with chronic cough and gastro-oesophageal reflux*. *Esophagus*, 2022.
113. Freeman, T.C., et al., *Graphia: A platform for the graph-based visualisation and analysis of high dimensional data*. *PLoS Comput Biol*, 2022. 18(7): p. e1010310.
114. Fuerch, J.H., et al., *Respiratory function monitoring during neonatal resuscitation: A systematic review*. *Resusc Plus*, 2022. 12: p. 100327.
115. Gallagher, G., et al., *Impact of simulation training on decision to delivery interval in cord prolapse*. *BMJ Simul Technol Enhanc Learn*, 2021. 7(6): p. 543-547.
116. Gandal, M.J., et al., *Broad transcriptomic dysregulation occurs across the cerebral cortex in ASD*. *Nature*, 2022. 611(7936): p. 532-539.



117. Gandhi, M.K. and C. Keane, *CD4 T Cells: the complicated key to unlocking the immune environment of classical Hodgkin Lymphoma*. *Haematologica*, 2022.
118. Gassiep, I., et al., *Comparative evaluation of Panther Fusion and real-time PCR for detection of Burkholderia pseudomallei in spiked human blood*. *Access Microbiol*, 2022. 4(3): p. 000333.
119. Gassiep, I., et al., *Speed and safety of mass spectrometry for identification of Burkholderia pseudomallei directly from spiked blood cultures*. *J Med Microbiol*, 2022. 71(4).
120. Gerdes, P., et al., *Retrotransposon instability dominates the acquired mutation landscape of mouse induced pluripotent stem cells*. *Nat Commun*, 2022. 13(1): p. 7470.
121. Gillespie, B.M., et al., *Incidence and risk factors for surgical wound complications in women with body mass index >30 kg/m² following cesarean delivery: a secondary analysis*. *AJOG Glob Rep*, 2022. 2(3): p. 100069.
122. Gillinder, L., C. Liegeois-Chauvel, and P. Chauvel, *What déjà vu and the "dreamy state" tell us about episodic memory networks*. *Clin Neurophysiol*, 2022. 136: p. 173-181.
123. Gillinder, L., et al., *Effect of immunotherapy on intracranial EEG in patients with seronegative autoimmune-associated epilepsy*. *Epileptic Disord*, 2022. 24(6): p. 1-6.
124. Giri, R., et al., *Secreted NF-KB suppressive microbial metabolites modulate gut inflammation*. *Cell Rep*, 2022. 39(2): p. 110646.
125. Giuliani, K.T.K., et al., *Hypoxic human proximal tubular epithelial cells undergo ferroptosis and elicit an NLRP3 inflammasome response in CD1c(+) dendritic cells*. *Cell Death Dis*, 2022. 13(8): p. 739.
126. Golledge, J., et al., *The predictive value of four serum biomarkers for major adverse events in patients with small abdominal aortic aneurysm*. *J Vasc Surg*, 2022.
127. Gonzalez Matheus, G.A. and A. Herat, *Treatment of longstanding alopecia areata universalis of the eyebrows/facial hair with oral and topical tofacitinib*. *Dermatol Online J*, 2022. 28(4).
128. Gooch, H.M., et al., *High-fidelity dendritic sodium spike generation in human layer 2/3 neocortical pyramidal neurons*. *Cell Rep*, 2022. 41(3): p. 111500.
129. Gracen, L., et al., *Implementing the right care in the right place at the right time for non-alcoholic fatty liver disease (NAFLD-RRR study): a study protocol for a community care pathway for people with type 2 diabetes*. *BMC Health Serv Res*, 2022. 22(1): p. 487.
130. Gracen, L., et al., *Low accuracy of FIB-4 test to identify people with diabetes at low risk of advanced fibrosis*. *J Hepatol*, 2022.
131. Gracen, L., et al., *Near-Fatal Hepatic Complication After Cardiac Catheter Ablation*. *JACC Case Rep*, 2022. 4(11): p. 645-648.
132. Gu, K., et al., *DROSHA but not DICER is required for human haematopoietic stem cell function*. *Clin Transl Immunology*, 2022. 11(1): p. e1361.
133. Guinsburg, R., et al., *Tactile Stimulation in Newborn Infants With Inadequate Respiration at Birth: A Systematic Review*. *Pediatrics*, 2022. 149(4).
134. Guo, L., et al., *Impact of unacceptable behaviour between healthcare workers on clinical performance and patient outcomes: a systematic review*. *BMJ Qual Saf*, 2022.
135. Gurgenci, T. and P. Good, *The lived experience of end-stage cardiac failure*. *Aust J Gen Pract*, 2022. 51(9): p. 647-651.
136. Gurgenci, T., *Against our post-modern palliation*. *Palliat Support Care*, 2022: p. 1-2.
137. Gurgenci, T., et al., *Hypertonic packs to reverse blindness caused by facial lymphoedema in the setting of head and neck cancer - A case report*. *Palliat Med*, 2022. 36(3): p. 555-559.
138. Gurgenci, T., et al., *Medicinal cannabis in palliative medicine: lessons learnt from randomised controlled trials*. *BMJ Support Palliat Care*, 2022.
139. Gurgenci, T., J. Hardy, and P. Good, *Research agenda for medical cannabis in palliative care*. *BMJ Support Palliat Care*, 2022.
140. Hail-Jares, K., et al., *Self-harm and suicide attempts among incarcerated lesbian, gay and bisexual people in Australia*. *Aust N Z J Psychiatry*, 2022: p. 48674221104744.
141. Hardy, J., et al., *Phase IIb Randomized, Placebo-Controlled, Dose-Escalating, Double-Blind Study of Cannabidiol Oil for the Relief of Symptoms in Advanced Cancer (MedCan1-CBD)*. *J Clin Oncol*, 2022: p. Jco2201632.
142. Harkus, U., et al., *Immune checkpoint inhibitors in HCC: Cellular, molecular and systemic data*. *Semin Cancer Biol*, 2022.
143. Hawke, K., et al., *Homeopathic medicinal products for preventing and treating acute respiratory tract infections in children*. *Cochrane Database Syst Rev*, 2022. 12(12): p. Cd005974.
144. Hayes, S.C., et al., *Do Patient-Reported Upper-Body Symptoms Predict Breast Cancer-Related Lymphoedema: Results from a Population-Based, Longitudinal Breast Cancer Cohort Study*. *Cancers (Basel)*, 2022. 14(23).
145. Hayward, K.L., et al., *Patient-oriented medication education intervention has long-term benefits for people with decompensated cirrhosis*. *Hepatol Commun*, 2022.
146. He, Y., et al., *Comparing IADPSG and NICE Diagnostic Criteria for GDM in Predicting Adverse Pregnancy Outcomes*. *Diabetes Care*, 2022. 45(9): p. 2046-2054.
147. Hensley-Hackett, K., et al., *Intuitive Eating Intervention and Diet Quality in Adults: A Systematic Literature Review*. *J Nutr Educ Behav*, 2022.
148. Herat, A., G. Gonzalez Matheus, and S.P. Kumarasinghe, *Hyperkeratotic flexural erythema/granular parakeratosis responding to doxycycline*. *Australas J Dermatol*, 2022.
149. Ho, K.K.F., et al., *Systematic Review of Case Reports of Bacillus Calmette-Guerin Vascular Infections*. *Ann Vasc Surg*, 2022.
150. Hobbs, A., O. Odutolu, and T. Huynh, *An Unusual Presentation of Autoimmune Primary Adrenal Insufficiency*. *Clin Chem*, 2022. 68(11): p. 1374-1378.
151. Homer, C.S., et al., *The National COVID-19 Clinical Evidence Taskforce: pregnancy and perinatal guidelines*. *Med J Aust*, 2022. 217 Suppl 9: p. S14-s19.
152. Hou, J.C., et al., *Automated video analysis of emotion and dystonia in epileptic seizures*. *Epilepsy Res*, 2022. 184: p. 106953.
153. Hume, D.A., et al., *CSF1R as a Therapeutic Target in Bone Diseases: Obvious but Not so Simple*. *Curr Osteoporos Rep*, 2022. 20(6): p. 516-531.
154. Hume, D.A., *Letter to the editor: Questioning the existence of Aif1(+), Csf1r(+) mesenchymal stem cells*. *Hepatology*, 2022.
155. Hume, D.A., S. Offermanns, and R. Bonnavion, *Contamination of isolated mouse Kupffer cells with liver sinusoidal endothelial cells*. *Immunity*, 2022. 55(7): p. 1139-1140.
156. Hunt, A., et al., *Central retinal vein occlusion 36-month outcomes with anti-vascular endothelial growth factors: the Fight Retinal Blindness! registry*. *Ophthalmol Retina*, 2022.
157. Hunt, A., et al., *Personal protective equipment for COVID-19 among healthcare workers in an emergency department: An exploratory survey of workload, thermal discomfort and symptoms of heat strain*. *Emerg Med Australas*, 2022.
158. Huynh, T., et al., *Fifty years of newborn screening for congenital hypothyroidism: current status in Australasia and the case for harmonisation*. *Clin Chem Lab Med*, 2022. 60(10): p. 1551-1561.
159. Indarwati, F., J. Munday, and S. Keogh, *Adaptation and validation of pediatric peripheral intravenous catheter insertion and care practices audit tools*. *Int J Nurs Sci*, 2022. 9(2): p. 179-186.
160. Ip, S., et al., *Chronic villitis of unknown aetiology: an Australian institution's 5-year experience*. *Pathology*, 2022. 54(7): p. 882-887.
161. Isbister, J.P., et al., *Patients' Choice, Consent, and Ethics in Patient Blood Management*. *Anesth Analg*, 2022. 135(3): p. 489-500.
162. Islam Roney, M.S., et al., *Isotypic analysis of anti-p53 serum autoantibodies and p53 protein tissue phenotypes in colorectal cancer*. *Hum Pathol*, 2022.
163. Ismail, T.F., et al., *Cardiac MR: From Theory to Practice*. *Front Cardiovasc Med*, 2022. 9: p. 826283.
164. Jaber, K., et al., *Further exploring the relationship between pressure pain thresholds and function in knee osteoarthritis*. *Musculoskelet Sci Pract*, 2022. 59: p. 102542.
165. Jackson, C.L., *Living with COVID-19 in 2022: the impact of the pandemic on Australian general practice*. *Med J Aust*, 2022. 216(9): p. 442-444.
166. Jamieson, E.L., et al., *Oral glucose tolerance test to diagnose gestational diabetes mellitus: impact of variations in specimen handling*. *Clin Biochem*, 2022.
167. Janca, E., et al., *Sex differences in suicide, suicidal ideation, and self-harm after release from incarceration: a systematic review and meta-analysis*. *Soc Psychiatry Psychiatr Epidemiol*, 2022.
168. Janssens, S., et al., *Clinicians' attitudes towards a co-leadership structure for maternity emergency teams: An interview study*. *J Interprof Care*, 2022: p. 1-9.

169. Janssens, S., et al., *Coleadership in Maternity Teams, a Randomized, Counterbalanced, Crossover Trial in Simulation*. Simul Healthc, 2022.
170. Janssens, S., et al., *Leadership sharing in maternity emergency teams: a retrospective cohort study in simulation*. BMJ Simul Technol Enhanc Learn, 2020. 6(3): p. 135-139.
171. Jardine, L.A., et al., *Accelerometer measures in extremely preterm and/or extremely low birth weight infants and association with abnormal general movements assessments at 28- and 32-weeks postmenstrual age*. Early Hum Dev, 2022. 174: p. 105685.
172. Jessop, M., A. Fischer, and P. Good, *Impact of expected parental death on the health of adolescent and young adult children: A systematic review of the literature*. Palliat Med, 2022. 36(6): p. 928-937.
173. Job, J., et al., *Implementing a general practitioner-to-general physician eConsult service (eConsultant) in Australia*. BMC Health Serv Res, 2022. 22(1): p. 1278.
174. Jobson, D., et al., *Development of melanoma clinical quality indicators for the Australian melanoma clinical outcomes registry (MelCOR): A modified Delphi study*. Australas J Dermatol, 2022.
175. Johnston, E.A., et al., *Dietary Practices After Primary Treatment for Ovarian Cancer: A Qualitative Analysis From the OPAL Study*. J Acad Nutr Diet, 2022.
176. Jones, K.L., M. Zhou, and D.J. Jhaveri, *Dissecting the role of adult hippocampal neurogenesis towards resilience versus susceptibility to stress-related mood disorders*. NPJ Sci Learn, 2022. 7(1): p. 16.
177. Jones, M.N., et al., *Balloon catheters versus vaginal prostaglandins for labour induction (CPI Collaborative): an individual participant data meta-analysis of randomised controlled trials*. Lancet, 2022. 400(10364): p. 1681-1692.
178. Joshi, A.A., et al., *RAGE antagonism with azeliragon improves xenograft rejection by T cells in humanized mice*. Clin Immunol, 2022. 245: p. 109165.
179. Kalas, T. and D. Gunn, *Corneal Epithelial Remodeling as a Cause of Chalazion-Induced Hypermetropia*. Cornea, 2022. 41(6): p. 785-788.
180. Karlsten, E.A. and T. Cross, *Endoscopic management of a duodenal diverticulum fishbone microperforation: a feasible alternative to an operative approach*. ANZ J Surg, 2022.
181. Keating, S.E., et al., *High-Intensity Interval Training is Safe, Feasible and Efficacious in Nonalcoholic Steatohepatitis: A Randomized Controlled Trial*. Dig Dis Sci, 2022: p. 1-17.
182. Keshvari, S., et al., *Editorial: Adipose Tissue in Obesity and Metabolic Disease*. Front Physiol, 2022. 13: p. 898861.
183. Keshvari, S., et al., *Therapeutic potential of macrophage colony-stimulating factor in chronic liver disease*. Dis Model Mech, 2022. 15(4).
184. Kevat, A., et al., *Impact of adenotonsillectomy on growth trajectories in preschool children with mild-moderate obstructive sleep apnea*. J Clin Sleep Med, 2022.
185. Khan, T., et al., *CUB Domain-Containing Protein 1 (CDCP1) is a rational target for the development of imaging tracers and antibody-drug conjugates for cancer detection and therapy*. Theranostics, 2022. 12(16): p. 6915-6930.
186. Kiani Shabestari, S., et al., *Absence of microglia promotes diverse pathologies and early lethality in Alzheimer's disease mice*. Cell Rep, 2022. 39(11): p. 110961.
187. Kieseker, G.A., et al., *A psychometric evaluation of the Female Sexual Function Index in women treated for breast cancer*. Cancer Med, 2022. 11(6): p. 1511-1523.
188. Kim, H.M., et al., *Self-reported executive function problems in adults born very low birthweight*. Paediatr Perinat Epidemiol, 2022.
189. Klamer, G., et al., *A comprehensive human leukocyte antigen analysis of 36 782 cord blood units stored in the Australian Public Cord Blood Banking Network*. Cytotherapy, 2022. 24(10): p. 990-998.
190. Koch, M.K., et al., *Exploring the Potential of PEG-Heparin Hydrogels To Support Long-term Ex Vivo Culture of Patient-derived Breast Explant Tissues*. Adv Healthc Mater, 2022: p. e2202202.
191. Koh, N., et al., *Asian Pacific Society of Cardiology Consensus Recommendations on Dyslipidaemia*. Eur Cardiol, 2021. 16: p. e54.
192. Kong, F.W., et al., *Mycobacterium haemophilum in a patient with inflammatory bowel disease*. Med J Aust, 2022. 217(8): p. 394-396.
193. Kostner, K.M. and G.M. Kostner, *Lp(a) and the Risk for Cardiovascular Disease: Focus on the Lp(a) Paradox in Diabetes Mellitus*. Int J Mol Sci, 2022. 23(7).
194. Kwok, M., et al., *Prevalence and sequelae of penile lichen sclerosus in males presenting for circumcision in regional Australia: a multicentre retrospective cohort study*. Transl Androl Urol, 2022. 11(6): p. 780-785.
195. Kynoch, K., et al., *Challenges and Feasibility of Co-Design Methods for Improving Parent Information in Maternity Care*. Int J Environ Res Public Health, 2022. 19(7).
196. Kynoch, K., et al., *Use of Patient-Reported Data within the Acute Healthcare Context: A Scoping Review*. Int J Environ Res Public Health, 2022. 19(18).
197. Lagrand, T.J., L. McLaughlin, and A.C. Lehn, *A Case to Tear One's Hair Out: Trichotillomania in Wilson's Disease*. Mov Disord Clin Pract, 2022. 9(6): p. 829-831.
198. Lamba, M., et al., *GESA Statement on the timing of elective endoscopic procedures in patients with recent COVID-19 infection*. J Gastroenterol Hepatol, 2022. 37(7): p. 1400-1401.
199. Lao, J.C., et al., *Type 2 immune polarization is associated with cardiopulmonary disease in preterm infants*. Sci Transl Med, 2022. 14(639): p. eaaz8454.
200. Larsen, E.N., et al., *Evaluating methods for the use and decontamination of needleless connectors: A qualitative inquiry*. Infect Dis Health, 2022.
201. Larsen, M.L., et al., *The magnitude rather than the rate of decline in fetal growth is a stronger risk factor for perinatal mortality in term infants*. Am J Obstet Gynecol MFM, 2022. 5(2): p. 100780.
202. Laviron, M., et al., *Tumor-associated macrophage heterogeneity is driven by tissue territories in breast cancer*. Cell Rep, 2022. 39(8): p. 110865.
203. Lawford, H.L.S., et al., *Acoustic Cry Characteristics of Infants as a Marker of Neurological Dysfunction: A Systematic Review and Meta-Analysis*. Pediatr Neurol, 2022. 129: p. 72-79.
204. Lee, A.L., et al., *'Teach me how to look after myself': What people with bronchiectasis want from education in a pulmonary rehabilitation setting*. Clin Respir J, 2022.
205. Lee, J.C. and R.A. Baer, *The complementary roles of MPS and CAC in renal patients*. J Nucl Cardiol, 2022. 29(3): p. 1446.
206. Lee, J.C. and R.A. Baer, *The practicalities of COVID's impact on nuclear cardiology*. J Nucl Cardiol, 2022. 29(5): p. 2739-2740.
207. Lee, J.C., G. Mitric, and A. Alghamry, *Contemporary use of ventilation-perfusion imaging for pulmonary embolism diagnosis*. J Thromb Thrombolysis, 2022.
208. Leung, S.S., et al., *Soluble RAGE Prevents Type 1 Diabetes Expanding Functional Regulatory T Cells*. Diabetes, 2022.
209. Li, L., C. Wilson, and A. Morton, *Maternal bradycardia heralding deteriorating HELLP syndrome (pregnancy hypertension)*. Pregnancy Hypertens, 2022. 27: p. 115-116.
210. Lim, M., et al., *Modeling Brain Metastasis by Internal Carotid Artery Injection of Cancer Cells*. J Vis Exp, 2022(186).
211. Lin, X., et al., *Novel plasma and brain proteins that are implicated in multiple sclerosis*. Brain, 2022.
212. Lindeman, G.J., et al., *VERONICA: Randomized Phase 2 Study of Fulvestrant and Venetoclax in ER-Positive Metastatic Breast Cancer Post-CDK4/6 Inhibitors - Efficacy, Safety, Biomarker Results*. Clin Cancer Res, 2022.
213. Ling, M.J.N. and M. Zonta, *Myxoinflammatory fibroblastic sarcoma*. ANZ J Surg, 2022.
214. Ling, V.Y., et al., *Targeting cell cycle and apoptosis to overcome chemotherapy resistance in acute myeloid leukemia*. Leukemia, 2022.
215. Long, D., et al., *Effectiveness-implementation hybrid-2 randomised trial of a collaborative Shared Care Model for Detecting Neurodevelopmental Impairments after Critical Illness in Young Children (DAISY): pilot study protocol*. BMJ Open, 2022. 12(7): p. e060714.
216. Long, G.V., et al., *Pembrolizumab versus placebo as adjuvant therapy in resected stage IIB or IIC melanoma (KEYNOTE-716): distant metastasis-free survival results of a multicentre, double-blind, randomised, phase 3 trial*. Lancet Oncol, 2022. 23(11): p. 1378-1388.
217. Longmore, D.K., et al., *Breastfeeding and infant growth in offspring of mothers with hyperglycaemia in pregnancy: The pregnancy and neonatal diabetes outcomes in remote Australia study*. Pediatr Obes, 2022: p. e12891.
218. Lord, S., J. Hardy, and P. Good, *Does Cannabidiol Have a Benefit as a Supportive Care Drug in Cancer? Curr Treat Options Oncol, 2022. 23(4): p. 514-525.*
219. Lord, S., P. Good, and G.I. Mielke, *Pain management in advanced cancer: physical activity as an outcome - accelerometer feasibility study*. BMJ Support Palliat Care, 2022.
220. Loughnan, S.A., et al., *Living with Loss: study protocol for a randomized controlled trial evaluating an internet-based perinatal bereavement program for parents following stillbirth and neonatal death*. Trials, 2022. 23(1): p. 464.
221. Louis, E., et al., *Modelling the benefits of an optimised treatment strategy for 5-ASA in mild-to-moderate ulcerative colitis*. BMJ Open Gastroenterol, 2022. 9(1).
222. Lu, X., et al., *CBL0137 impairs homologous recombination repair and sensitizes high-grade serous ovarian carcinoma to PARP inhibitors*. J Exp Clin Cancer Res, 2022. 41(1): p. 355.
223. Luo, X., et al., *Vitamin C protects against hypoxia, inflammation, and ER stress in primary human preadipocytes and adipocytes*. Mol Cell Endocrinol, 2022. 556: p. 111740.
224. Lyons, M., et al., *Goals, challenges and strategies for wound and bleeding management in total knee arthroplasty: A modified Delphi method*. J Orthop Surg (Hong Kong), 2022. 30(3): p. 10225536221138985.
225. Maharaj, A.D., et al., *Monitoring quality of care in hepatocellular carcinoma: A modified Delphi consensus*. Hepatol Commun, 2022. 6(11): p. 3260-3271.
226. Mahizhnan, M.M., et al., *Electroencephalographic evolution of SEEG-associated intracerebral haemorrhage*. Neurophysiol Clin, 2022. 52(6): p. 486-488.
227. Malloy, R., et al., *Refractory fulminant colitis following ocrelizumab therapy requiring colectomy in a patient with multiple sclerosis*. BMJ Case Rep, 2022. 15(12).
228. Marko, S., S. Wylie, and J. Utter, *Enablers and barriers to healthy eating among hospital nurses: A systematic review*. Int J Nurs Stud, 2022. 138: p. 104412.
229. Martin, A.K., et al., *Allied health transdisciplinary models of care in hospital settings: A scoping review*. J Interprof Care, 2022: p. 1-13.
230. Martin, A.K., et al., *Co-production of a transdisciplinary assessment by researchers and healthcare professionals: a case study*. Public Health Res Pract, 2022. 32(2).
231. Martin, A.K., et al., *Healthcare Teams: Terminology, Confusion, and Ramifications*. J Multidiscip Healthc, 2022. 15: p. 765-772.
232. Martin, A.K., et al., *Transdisciplinary allied health assessment for patients with stroke: a pre-/post- mixed methods study protocol*. BMC Health Serv Res, 2022. 22(1): p. 1578.
233. Martin, E., et al., *Impact of a health services innovation university program in a major public hospital and health service: a mixed methods evaluation*. Implement Sci Commun, 2022. 3(1): p. 46.
234. Mashal, M., et al., *Perspectives on Support Material for Referrals to Cochlear Implantation Teams*. Am J Audiol, 2022. 31(1): p. 11-20.
235. Masri, H.E., et al., *Patient-based benefit-risk assessment of medicines: development, refinement, and validation of a content search strategy to retrieve relevant studies*. J Med Libr Assoc, 2022. 110(2): p. 185-204.

236. McAlinden, B.M., J.L. Hough, and S. Kuys, *Measuring the effects of airway clearance in mechanically ventilated infants and children: A systematic review*. *Physiotherapy*, 2022. 117: p. 47-62.
237. McCray, S., L. Barsha, and K. Maunder, *Implementation of an electronic solution to improve malnutrition identification and support clinical best practice*. *J Hum Nutr Diet*, 2022.s
238. McIntyre, H.D. and A. Sweeting, *Gestational diabetes in Australia: navigating a tsunami*. *Lancet Diabetes Endocrinol*, 2022. 10(12): p. 846-847.
239. McIntyre, H.D., et al., *Hyperglycemia in Pregnancy and Women's Health in the 21st Century*. *Int J Environ Res Public Health*, 2022. 19(24).
240. McKeague, S., et al., *Acquired HbH disease diagnosed by HbA1c capillary electrophoresis*. *Br J Haematol*, 2022.
241. Meakin, A.S., et al., *An ex vivo approach to understanding sex-specific differences in placental androgen signalling in the presence and absence of inflammation*. *Placenta*, 2022. 120: p. 49-58.
242. Medeiros, P.B., et al., *Neonatal near miss: A review of current definitions and the need for standardisation*. *Aust N Z J Obstet Gynaecol*, 2022.
243. Meguerdichian, M., et al., *Impact of the PEARLS Healthcare Debriefing cognitive aid on facilitator cognitive load, workload, and debriefing quality: a pilot study*. *Adv Simul (Lond)*, 2022. 7(1): p. 40.
244. Meloncelli, N., et al., *Clinicians' perspectives on gestational diabetes screening during the global COVID-19 pandemic in Australia*. *Aust N Z J Obstet Gynaecol*, 2022.
245. Mercieca-Bebber, R., et al., *Patient-reported outcome (PRO) results from the AGITG DOCTOR trial: a randomised phase 2 trial of tailored neoadjuvant therapy for resectable oesophageal adenocarcinoma*. *BMC Cancer*, 2022. 22(1): p. 276.
246. Meric-Bernstam, F., et al., *Combination of the STING Agonist MIW815 and PD-1 Inhibitor Spartalizumab in Advanced/Metastatic Solid Tumors or Lymphomas: An Open-label, Multicenter, Phase Ib Study*. *Clin Cancer Res*, 2022.
247. Mills, G.S., et al., *Capturing the lived experiences of women with lymphoma in pregnancy: a qualitative study*. *Leuk Lymphoma*, 2022: p. 1-10.
248. Mnatzaganian, G., et al., *Trends in percentages of gestational diabetes mellitus attributable to overweight, obesity, and morbid obesity in regional Victoria: an eight-year population-based panel study*. *BMC Pregnancy Childbirth*, 2022. 22(1): p. 95.
249. Mohamad Zainal, N.H., et al., *Childhood allergy susceptibility: The role of the immune system development in the in-utero period*. *Hum Immunol*, 2022.
250. Morgan, T.J., et al., *Pulmonary gas exchange evaluated by machine learning: a computer simulation*. *J Clin Monit Comput*, 2022: p. 1-10.
251. Morton, A., *Comorbidities of obesity and preconception counselling: Consideration of bariatric surgery*. *Aust J Gen Pract*, 2022. 51(8): p. 631-635.
252. Morton, A., *Epigastric pain and partial ptosis*. *Diabet Med*, 2022: p. e15018.
253. Morton, A., *Letter to the Editor: Thiamine deficiency and bariatric surgery*. *Obstet Med*, 2022. 15(1): p. 71.
254. Morton, A., *Low haptoglobin and a positive direct antiglobulin test without haemolysis in pregnancy*. *Obstet Med*, 2022. 15(4): p. 280-282.
255. Morton, A., *Pregnancy complicated by neurological and neurosurgical conditions - The evidence regarding mode of delivery*. *Obstet Med*, 2022. 15(1): p. 11-18.
256. Morton, A., R. Ruddell, and O. Treacy, *Herbal tea and hypoadrenalism*. *Aust J Gen Pract*, 2022. 51(5): p. 353-355.
257. Muelbert, M., et al., *Glucocorticoids in preterm human milk*. *Front Nutr*, 2022. 9: p. 965654.
258. Muir, J., et al., *Reply to: A practical guide on the use of imiquimod cream to treat lentigo maligna*. *Australas J Dermatol*, 2022.
259. Murphy, V.E., et al., *Effect of asthma management with exhaled nitric oxide versus usual care on perinatal outcomes*. *Eur Respir J*, 2022. 60(5).
260. Nangle, M.R., et al., *Oral health-related quality of life is more strongly correlated with mental health than with oral health in relapsing-remitting multiple sclerosis*. *J Oral Rehabil*, 2022.
261. Naruse, T., et al., *Effectiveness of social activity interventions on sleep among older people: a systematic review protocol*. *JBI Evid Synth*, 2022.
262. Nasir, B.F., R. Vinayagam, and K. Rae, *"It's what makes us unique": Indigenous Australian perspectives on genetics research to improve comorbid mental and chronic disease outcomes*. *Curr Med Res Opin*, 2022. 38(7): p. 1219-1228.
263. Nath, K., et al., *Activity and Outcomes of Autologous Stem Cell Transplantation in the Private Sector in Australia*. *Intern Med J*, 2022.
264. Ndayishimiye, J., et al., *Nanomaterials: The New Antimicrobial Magic Bullet*. *ACS Infect Dis*, 2022. 8(4): p. 693-712.
265. Ndayishimiye, J., et al., *Understanding the relationship between solubility and permeability of γ -cyclodextrin-based systems embedded with poorly aqueous soluble benzimidazole*. *Int J Pharm*, 2022. 616: p. 121487.
266. Nelles, R., et al., *Real world molecular characterisation and clonal evolution of acute myeloid leukaemia reveals therapeutic opportunities and challenges*. *Pathology*, 2022.
267. Nestor, P.J., *Management-induced distress syndrome*. *Brain*, 2022. 145(11): p. e104.
268. Ngo, M.D., et al., *A blunted GPR183/oxysterol axis during dysglycemia results in delayed recruitment of macrophages to the lung during M. tuberculosis infection*. *J Infect Dis*, 2022.
269. Ngoo, A. and J. Hirst, *Inadvertent ureteric cannulation following suprapubic catheter change - Case report and review of the literature*. *Urol Case Rep*, 2022. 42: p. 102021.
270. Nguyen, T.N., et al., *Global Impact of the COVID-19 Pandemic on Stroke Volumes and Cerebrovascular Events: One-Year Follow-up*. *Neurology*, 2022.
271. Nightingale, J., et al., *Immunotherapy for the treatment of perineural spread in cutaneous head and neck squamous cell carcinoma: Time to rethink treatment paradigms*. *Head Neck*, 2022. 44(5): p. 1099-1105.
272. Nitschke, S., et al., *Glycogen synthase downregulation rescues the amylopectinosis of murine RBCK1 deficiency*. *Brain*, 2022.
273. North, K., et al., *Family Involvement in the Routine Care of Hospitalized Preterm or Low Birth Weight Infants: A Systematic Review and Meta-analysis*. *Pediatrics*, 2022. 150(Suppl 1).
274. Nowlan, B., E.D. Williams, and M.R. Doran, *Direct bone marrow injection of human bone marrow-derived stromal cells into mouse femurs results in greater prostate cancer PC-3 cell proliferation, but not specifically proliferation within the injected femurs*. *BMC Cancer*, 2022. 22(1): p. 554.
275. Nyanhoga, M.M., et al., *Ripple effects: integrating international medical graduates from refugee backgrounds into the health system in Australia*. *BMJ Glob Health*, 2022. 7(4).
276. O'Callaghan, J.L., et al., *Sex-dependent differential transcript expression in the placenta of growth restricted infants*. *Placenta*, 2022. 128: p. 1-8.
277. O'Callaghan, W.B., et al., *Computer-Aided Surgery-Navigated, Functional Alignment Total Knee Arthroplasty: A Surgical Technique*. *Arthroplast Today*, 2022. 14: p. 121-127.
278. O'Connor, H., et al., *Gut microbiome composition is similar between pregnant women with excess body fat with healthy and less healthy dietary intake patterns*. *J Hum Nutr Diet*, 2022.
279. O'Hara, M., et al., *Patient experiences of conservative treatment for early stage endometrial cancer and endometrial hyperplasia with atypia using levonorgestrel intrauterine device: A qualitative study*. *Gynecol Oncol Rep*, 2022. 39: p. 100914.
280. Olson, R.E., et al., *Using a qualitative sub-study to inform the design and delivery of randomised controlled trials on medicinal cannabis for symptom relief in patients with advanced cancer*. *Trials*, 2022. 23(1): p. 752.
281. Olson, R.E., et al., *'What price do you put on your health?': Medical cannabis, financial toxicity and patient perspectives on medication access in advanced cancer*. *Health Expect*, 2022.
282. Oreskovic, N.M., et al., *Cardiometabolic profiles in children and adults with overweight and obesity and down syndrome*. *Am J Med Genet A*, 2022.
283. Ormazabal, V., et al., *The link between gestational diabetes and cardiovascular diseases: potential role of extracellular vesicles*. *Cardiovasc Diabetol*, 2022. 21(1): p. 174.
284. Orsso, C.E., et al., *Mapping ongoing nutrition intervention trials in muscle, sarcopenia, and cachexia: a scoping review of future research*. *J Cachexia Sarcopenia Muscle*, 2022.
285. Ozberk, D., et al., *Association of KCNJ6 rs2070995 and methadone response for pain management in advanced cancer at end-of-life*. *Sci Rep*, 2022. 12(1): p. 17422.
286. Ozberk, D., et al., *Association of polymorphisms in ARRB2 and clinical response to methadone for pain in advanced cancer*. *Pharmacogenomics*, 2022. 23(5): p. 281-289.
287. Pagel, C.N., et al., *Protease-activated receptor-2 dependent and independent responses of bone cells to prostate cancer cell secretory products*. *Prostate*, 2022. 82(6): p. 723-739.
288. Pagnozzi, A.M., et al., *Early brain morphometrics from neonatal MRI predict motor and cognitive outcomes at 2-years corrected age in very preterm infants*. *Neuroimage*, 2022: p. 119815.
289. Palma, C., H.D. McIntyre, and C. Salomon, *Extracellular Vesicles-New Players in Cell-to-Cell Communication in Gestational Diabetes Mellitus*. *Biomedicine*, 2022. 10(2).
290. Pandithan, D., et al., *BAP1 Tumour Predisposition Syndrome Due to Whole BAP1 Gene Deletion*. *Case Rep Genet*, 2022. 2022: p. 5503505.
291. Pang, E.S., et al., *Discordance in STING-Induced Activation and Cell Death Between Mouse and Human Dendritic Cell Populations*. *Front Immunol*, 2022. 13: p. 794776.
292. Paolicelli, R.C., et al., *Microglia states and nomenclature: A field at its crossroads*. *Neuron*, 2022. 110(21): p. 3458-3483.
293. Parvin, I., et al., *Toxoplasma gondii Infection Is Associated with Low Birth Weight: Findings from an Observational Study among Rural Bangladeshi Women*. *Pathogens*, 2022. 11(3).
294. Pilla, B., et al., *JBI series paper 4: the role of collaborative evidence networks in promoting and supporting evidence-based health care globally: reflections from 25 years across 38 countries*. *J Clin Epidemiol*, 2022.
295. Pollock, D., et al., *Moving from consultation to co-creation with knowledge users in scoping reviews: guidance from the JBI Scoping Review Methodology Group*. *JBI Evid Synth*, 2022. 20(4): p. 969-979.
296. Poon, E.L., et al., *Patient concerns regarding antidepressant drugs: a retrospective analysis using data from a medicines call centre*. *J Prim Health Care*, 2022. 14(2): p. 99-108.
297. Purcell, S. and M. Beckmann, *The utility of routine screening for anaemia at 36 weeks gestation*. *Aust N Z J Obstet Gynaecol*, 2022.
298. Rad, H.S., et al., *Corrigendum: The effects of COVID-19 on the placenta during pregnancy*. *Front Immunol*, 2022. 13: p. 998406.
299. Radford-Smith, D.E., et al., *Depressive symptoms in non-alcoholic fatty liver disease are identified by perturbed lipid and lipoprotein metabolism*. *PLoS One*, 2022. 17(1): p. e0261555.
300. Ramaswamy, V.V., et al., *Maintaining normal temperature immediately after birth in late preterm and term infants: A systematic review and meta-analysis*. *Resuscitation*, 2022. 180: p. 81-98.
301. Raminga, P.V., et al., *Combined thioredoxin reductase and glutaminase inhibition exerts synergistic anti-tumor activity in MYC-high high-grade serous ovarian carcinoma*. *Mol Ther*, 2022.
302. Ratnasekera, I.U., et al., *Epidemiology of ascites fluid infections in patients with cirrhosis in Queensland, Australia from 2008 to 2017: A population-based study*. *Medicine (Baltimore)*, 2022. 101(20): p. e29217.

303. Richmond, C.M., et al., 'Propped and prone' positioning reduces respiratory events in spontaneously breathing preterm infants: A randomised triple crossover study. *J Paediatr Child Health*, 2022.
304. Roberts, K.E., et al., Systemic therapies for preventing or treating aromatase inhibitor-induced musculoskeletal symptoms in early breast cancer. *Cochrane Database Syst Rev*, 2022. 1(1): p. Cd013167.
305. Roizman, M., et al., Impact of the first wave of COVID-19 on stroke admissions across three tertiary hospitals in Brisbane. *Intern Med J*, 2022.
306. Sabdia, M.B., et al., Neoantigens - the next frontier in precision immunotherapy for B-cell lymphoproliferative disorders. *Blood Rev*, 2022: p. 100969.
307. Sanderson, J., N. Tuttle, and L. Laakso, Acoustic Radiation Force Impulse Elastography Assessment of Lymphoedema Tissue: An Insight into Tissue Stiffness. *Cancers (Basel)*, 2022. 14(21).
308. Sanderson, P.M., et al., Signaling Patient Oxygen Desaturation with Enhanced Pulse Oximetry Tones. *Biomed Instrum Technol*, 2022. 56(2): p. 46-57.
309. Sandham, V., A.E. Hill, and F. Hinchliffe, The perspectives of Australian speech pathologists in providing evidence-based practices to children with autism. *Int J Lang Commun Disord*, 2022.
310. Santoro, J.D., et al., Assessment and Diagnosis of Down Syndrome Regression Disorder: International Expert Consensus. *Front Neurol*, 2022. 13: p. 940175.
311. Santoro, S.L., et al., Unexplained regression in Down syndrome: Management of 51 patients in an international patient database. *Am J Med Genet A*, 2022. 188(10): p. 3049-3062.
312. Sapsford, T.P., et al., Forgetful, sad and old: Do vascular cognitive impairment and depression share a common pre-disease network and how is it impacted by ageing? *J Psychiatr Res*, 2022. 156: p. 611-627.
313. Saunus, J.M., et al., Epigenome erosion and SOX10 drive neural crest phenotypic mimicry in triple-negative breast cancer. *NPJ Breast Cancer*, 2022. 8(1): p. 57.
314. Scheuer, C.M., et al., Regional divergence and time trends in the prevalence of gestational diabetes mellitus: a national Danish cohort study. *Acta Diabetol*, 2022.
315. Schlebusch, S., et al., Standard rectal swabs as a surrogate sample for gut microbiome monitoring in intensive care. *BMC Microbiol*, 2022. 22(1): p. 99.
316. Schreiber, V., et al., Definitions matter: detection rates and perinatal outcomes for infants prenatally identified with late fetal growth restriction using biometric vs consensus Delphi criteria. *Ultrasound Obstet Gynecol*, 2022.
317. Schulz, E.B. and M.R. Bright, Fire risk when using high-flow nasal oxygen during procedural sedation. *Anaesthesia*, 2022.
318. Scott, T.M., et al., Long-term limitations and complications of trans-scleral diode laser cycloablation for refractory glaucoma. *Clin Exp Ophthalmol*, 2022.
319. Seib, C., et al., Determining the psychometric properties of the Greene Climacteric Scale (GCS) in women previously treated for breast cancer: A pooled analysis of data from the Women's Wellness after Cancer Programs. *Maturitas*, 2022. 161: p. 65-71.
320. Seib, C., et al., Improving health-related quality of life in women with breast, blood, and gynaecological Cancer with an eHealth-enabled 12-week lifestyle intervention: the women's wellness after Cancer program randomised controlled trial. *BMC Cancer*, 2022. 22(1): p. 747.
321. Sengal, A.T., et al., Spatial expression of the FGFR2b splice isoform and its prognostic significance in endometrioid endometrial carcinoma. *J Pathol Clin Res*, 2022. 8(6): p. 521-537.
322. Seo, G.Y., et al., Brain glycogen content is increased in the acute and interictal chronic stages of the mouse pilocarpine model of epilepsy. *Epilepsia Open*, 2022. 7(2): p. 361-367.
323. Shajib, M.S., et al., Collagenase treatment appears to improve cartilage tissue integration but damage to collagen networks is likely permanent. *J Tissue Eng*, 2022. 13: p. 20417314221074207.
324. Sharma, V., et al., Anomalous Right Coronary Artery Originating From the Pulmonary Artery (ARCAPA): A Rare Presentation in the Fifth Decade. *World J Pediatr Congenit Heart Surg*, 2022: p. 21501351221141437.
325. Sharples, K., et al., Protocol of trans-Tasman feasibility randomised controlled trial of the Younger Women's Wellness After Breast Cancer (YWWACP) lifestyle intervention. *Pilot Feasibility Stud*, 2022. 8(1): p. 165.
326. Shen, A.W., et al., Prenatal imaging features and perinatal outcomes of foetal volvulus-A literature review. *Prenat Diagn*, 2022. 42(2): p. 192-200.
327. Sheng, Y.H. and S.Z. Hasnain, Mucus and Mucins: The Underappreciated Host Defence System. *Front Cell Infect Microbiol*, 2022. 12: p. 856962.
328. Sheng, Y.H., et al., MUC1-mediated Macrophage Activation Promotes Colitis-associated Colorectal Cancer via Activating the Interleukin-6/ Signal Transducer and Activator of Transcription 3 Axis. *Cell Mol Gastroenterol Hepatol*, 2022. 14(4): p. 789-811.
329. Shipton, E., et al., Gestational diabetes screening from the perspective of consumers: Insights from early in the COVID-19 pandemic and opportunities to optimise experiences. *Aust N Z J Obstet Gynaecol*, 2022.
330. Shklovskaya, E., et al., Durable Responses to Anti-PD1 and Anti-CTLA4 in a Preclinical Model of Melanoma Displaying Key Immunotherapy Response Biomarkers. *Cancers (Basel)*, 2022. 14(19).
331. Sim, S.L., et al., Macrophages in Skin Wounds: Functions and Therapeutic Potential. *Biomolecules*, 2022. 12(11).
332. Sim, S.L., et al., Myeloid WIs expression is dispensable for skin wound healing and blood vessel regeneration. *Front Endocrinol (Lausanne)*, 2022. 13: p. 957833.
333. Singh, R., et al., Characteristics and Neural Correlates of Emotional Behavior during Prefrontal Seizures. *Ann Neurol*, 2022. 92(6): p. 1052-1065.
334. Sinha, D., et al., Repurposing of Commercially Existing Molecular Target Therapies to Boost the Clinical Efficacy of Immune Checkpoint Blockade. *Cancers (Basel)*, 2022. 14(24).



335. Sivakaanthan, A., et al., *Transfusion-related acute lung injury (TRALI): a retrospective review of reported cases in Queensland, Australia over 20 years*. Blood Transfus, 2022.
336. Smith, A., *The Intersection of Law and Medicine in Full Skin Examination in Screening for Cutaneous Malignancy*. J Law Med, 2022. 29(2): p. 428-436.
337. Smith, A.L., et al., *Factors influencing acceptance, adoption and adherence to sentinel node biopsy recommendations in the Australian Melanoma Management Guidelines: a qualitative study using an implementation science framework*. Implement Sci Commun, 2022. 3(1): p. 103.
338. Smith, P.A., et al., *Implementation barriers and enablers of midwifery group practice for vulnerable women: a qualitative study in a tertiary urban Australian health service*. BMC Health Serv Res, 2022. 22(1): p. 1265.
339. Smits, N. and G.J. Faulkner, *Nanopore Sequencing to Identify Transposable Element Insertions and Their Epigenetic Modifications*. Methods Mol Biol, 2023. 2607: p. 151-171.
340. Snell, C., et al., *Validation of EGFR mutation testing on cytological smears of lung cancer using the Idylla platform*. Pathology, 2022.
341. Snelling, P.J., et al., *Comparison of abusive head trauma versus non-inflicted subdural haematoma in infants: A retrospective cohort study*. Emerg Med Australas, 2022.
342. Snow, K.J., et al., *Impact of dual diagnosis on healthcare and criminal justice costs after release from Queensland prisons: a prospective cohort study*. Aust J Prim Health, 2022. 28(3): p. 264-270.
343. So, C.L., et al., *Increased matrix stiffness suppresses ATP-induced sustained Ca(2+) influx in MDA-MB-231 breast cancer cells*. Cell Calcium, 2022. 104: p. 102569.
344. Soncin, L.D., et al., *Correlation between fluorodeoxyglucose positron emission tomography brain hypometabolism and posttraumatic stress disorder symptoms in temporal lobe epilepsy*. Epilepsia, 2022. 63(7): p. e74-e79.
345. Song, M., et al., *Characteristics associated with frequent health system use by Australian adults with intellectual disability: A cohort study*. J Appl Res Intellect Disabil, 2022. 35(6): p. 1403-1417.
346. Spence, R.R., et al., *A Randomised, Comparative, Effectiveness Trial Evaluating Low- versus High-Level Supervision of an Exercise Intervention for Women with Breast Cancer: The SAFE Trial*. Cancers (Basel), 2022. 14(6).
347. Srinivasan, S., et al., *Remodelling of the tumour microenvironment by the kallikrein-related peptidases*. Nat Rev Cancer, 2022. 22(4): p. 223-238.
348. Stables, J., et al., *A kinase-dead Csf1r mutation associated with adult-onset leukoencephalopathy has a dominant inhibitory impact on CSF1R signalling*. Development, 2022. 149(8).
349. Stapelberg, N.J.C., et al., *Environmental Stressors and the PINE Network: Can Physical Environmental Stressors Drive Long-Term Physical and Mental Health Risks?* Int J Environ Res Public Health, 2022. 19(20).
350. Stapelberg, N.J.C., et al., *The pathophysiology of major depressive disorder through the lens of systems biology: Network analysis of the psycho-immune-neuroendocrine physiome*. J Neuroimmunol, 2022. 372: p. 577959.
351. Starobova, H., et al., *The Role of the Neuronal Microenvironment in Sensory Function and Pain Pathophysiology*. J Neurochem, 2022.
352. Summers, K.M., et al., *Generation and network analysis of an RNA-seq transcriptional atlas for the rat*. NAR Genom Bioinform, 2022. 4(1): p. lqac017.
353. Sun, C. and D. Lim, *Chemical peels for atrophic acne scarring: Evolution of peel types and methods*. Australas J Dermatol, 2022.
354. Sun, C. and J. Muir, *Morbiform rash with deranged liver functions*. Aust J Gen Pract, 2022. 51(3): p. 145-147.
355. Tan, J., et al., *Antidepressant Shugan Jieyu Capsule Alters Gut Microbiota and Intestinal Microbiome Function in Rats With Chronic Unpredictable Mild Stress -Induced Depression*. Front Pharmacol, 2022. 13: p. 828595.
356. Tan-Koay, A.G., et al., *Protocol for a Nested, Retrospective Study of the Australian Placental Transfusion Study Cohort*. Cureus, 2022. 14(8): p. e27693.
357. Tay, N., et al., *Chemotherapy-induced peripheral neuropathy in children and adolescent cancer patients*. Front Mol Biosci, 2022. 9: p. 1015746.
358. Taye, B., et al., *Australian general practitioners' perceptions of the barriers and opportunities for community-based care of patients with viral hepatitis: a mixed methods study*. J Prim Health Care, 2022. 14(3): p. 229-236.
359. Taye, B.W., P.C. Valery, and P.J. Clark, *Targeted antiviral treatment of hepatitis B virus in culturally and linguistically diverse populations to achieve elimination targets in Australia*. J Viral Hepat, 2022.
360. Teasdale, S.L., et al., *Continuous Glucose Monitoring in Young Adults With Type 1 Diabetes: Impact on Hypoglycemia Confidence and Fear*. Diabetes Spectr, 2022. 35(3): p. 322-326.
361. Thiele, C.E. and M. Beckmann, *Induction of labour involving an amniotomy: Waiting compared to immediate oxytocin*. Aust N Z J Obstet Gynaecol, 2022.
362. Thomas Manapurathe, D., et al., *Cohort Study Examining the Association of Optimal Blood Pressure Control at Entry With Infrarenal Abdominal Aortic Aneurysm Growth*. Front Cardiovasc Med, 2022. 9: p. 868889.
363. Tindal, K., et al., *Causes of perinatal deaths in Australia: Slow progress in the preterm period*. Aust N Z J Obstet Gynaecol, 2022.
364. Titmuss, A., et al., *Association between hyperglycaemia in pregnancy and growth of offspring in early childhood: The PANDORA study*. Pediatr Obes, 2022. p. e12932.
365. Titmuss, A., et al., *Hyperglycemia in pregnancy and developmental outcomes in children at 18-60 months of age: the PANDORA Wave 1 study*. J Dev Orig Health Dis, 2022: p. 1-11.
366. Tobin, J.W.D., M.R. Green, and M.K. Gandhi, *The Potential for Less Toxic CAR T-cell Therapies*. Cancer Immunol Res, 2022. 10(12): p. 1422.
367. Toi, M., et al., *Adjuvant Abemaciclib Combined with Endocrine Therapy: Efficacy Results in monarchE Cohort 1*. Oncologist, 2022.
368. Tran, M.N., et al., *Conjunctival Merkel cell carcinoma: case report and review of the literature*. Digit J Ophthalmol, 2022. 28(3): p. 64-68.
369. Tran, T., et al., *Kinematic alignment in total knee arthroplasty: a five-year prospective, multicentre, survivorship study*. Bone Jt Open, 2022. 3(8): p. 656-665.
370. Tran, T.T., et al., *Inhibition of the master regulator of Listeria monocytogenes virulence enables bacterial clearance from spacious replication vacuoles in infected macrophages*. PLoS Pathog, 2022. 18(1): p. e1010166.
371. Trubetsky, V., et al., *Mapping genomic loci implicates genes and synaptic biology in schizophrenia*. Nature, 2022. 604(7906): p. 502-508.
372. Tseng, H.W., et al., *Inflammasomes and the IL-1 Family in Bone Homeostasis and Disease*. Curr Osteoporos Rep, 2022. 20(3): p. 170-185.
373. Tseng, H.W., et al., *Spinal cord injury reprograms muscle fibroadipogenic progenitors to form heterotopic bones within muscles*. Bone Res, 2022. 10(1): p. 22.
374. Turner, J.M., et al., *Decreased fetal movements—the utility of ultrasound to identify infants at risk and prevent stillbirth is poor*. Am J Obstet Gynecol MFM, 2022. 5(2): p. 100782.
375. Turner, J.M., et al., *Phosphodiesterase-5 inhibitors in pregnancy: Systematic review and meta-analysis of maternal and perinatal safety and clinical outcomes*. Bjog, 2022.
376. Twiggs, J., et al., *Patient-reported impairment following TKA is reduced when a computationally simulated predicted ideal alignment is achieved*. Knee Surg Sports Traumatol Arthrosc, 2022.
377. Utter, J., S. McCray, and S. Denny, *Work site food purchases among healthcare staff: Relationship with healthy eating and opportunities for intervention*. Nutr Diet, 2022. 79(2): p. 265-271.
378. van Bree, E.J., et al., *A hidden layer of structural variation in transposable elements reveals potential genetic modifiers in human disease-risk loci*. Genome Res, 2022. 32(4): p. 656-670.
379. van den Ameel, J., et al., *Reduced chromatin accessibility correlates with resistance to Notch activation*. Nat Commun, 2022. 13(1): p. 2210.
380. van Doorn, C.L.R., et al., *Transcriptional profiles predict treatment outcome in patients with tuberculosis and diabetes at diagnosis and at two weeks after initiation of anti-tuberculosis treatment*. EBioMedicine, 2022. 82: p. 104173.
381. Vardanega, J., et al., *Animal bite wounds and their management in tropical Australia*. Int J Infect Dis, 2022. 118: p. 1-9.
382. Vassão, P.G., et al., *Radiofrequency and skin rejuvenation: a systematic review*. J Cosmet Laser Ther, 2022. 24(1-5): p. 9-21.
383. Viecelli, A.K., et al., *Study protocol for Vascular Access outcome measure for function: a validation study in hemodialysis (VALID) : A multicenter, multinational validation study to assess the accuracy and feasibility of measuring vascular access function in clinical practice*. BMC Nephrol, 2022. 23(1): p. 372.
384. Wan Bahrum, W., et al., *Oral water-soluble contrast (Gastrografin) for malignant bowel obstruction: open label pilot study*. BMJ Support Palliat Care, 2022.
385. Wan, Y., et al., *A Review on the Structure and Anti-Diabetic (Type 2) Functions of β -Glucans*. Foods, 2021. 11(1).
386. Wan, Y., et al., *Liver fibrosis alters the molecular structures of hepatic glycogen*. Carbohydr Polym, 2022. 278: p. 118991.
387. Wang, M., et al., *Evaluating behavioral economic interventions for promoting cancer screening uptake and adherence in targeted populations: a systematic review protocol*. JBI Evid Synth, 2022.
388. Wang, Y., et al., *Carriage and Transmission of Macrolide Resistance Genes in Patients With Chronic Respiratory Conditions and Their Close Contacts*. Chest, 2022.
389. Wang, Z., et al., *The Extraction of Liver Glycogen Molecules for Glycogen Structure Determination*. J Vis Exp, 2022(180).
390. Wang, Z., et al., *The fragility of liver glycogen from humans with type 2 diabetes: A pilot study*. Int J Biol Macromol, 2022. 221: p. 83-90.
391. Warren, N., et al., *Anti-glutamic acid decarboxylase antibody screening in first-episode psychosis*. Aust N Z J Psychiatry, 2022: p. 48674221089560.
392. Warren, N., et al., *Tardive Seizures After Electroconvulsive Therapy*. J ect, 2022.
393. Watzek, J.T., et al., *A cost-consequences analysis of the SAFE trial: a comparative, effectiveness trial evaluating high- versus low-supervision of an exercise intervention for women with breast cancer*. Breast Cancer, 2022.
394. Webber, T., et al., *Interplay Between the Immune and Endocrine Systems in the Lung: Implications for TB Susceptibility*. Front Immunol, 2022. 13: p. 829355.
395. White, H., et al., *Care for adults with COVID-19: living guidelines from the National COVID-19 Clinical Evidence Taskforce*. Med J Aust, 2022. 217(7): p. 368-378.
396. Wilkinson, S.A., et al., *Exploring the diets of mothers and their partners during pregnancy: Findings from the Queensland Family Cohort pilot study*. Nutr Diet, 2022.
397. Wilkinson, S.A., et al., *Qualitative analysis of the implementation of a hospital room service in a large metropolitan hospital: foundations for transformation*. JBI Evid Implement, 2022. 20(3): p. 199-208.
398. Wilkinson, S.A., et al., *The incorporation of body composition assessments as part of routine clinical care in a tertiary hospital's dietetic department: a best practice implementation project*. JBI Evid Implement, 2021. 20(1): p. 21-32.
399. Wilkinson, S.A., S. Guyatt, and J.C. Willcox, *Informing a healthy eating and physical activity program to decrease postnatal weight retention: What are women experiencing and what type of program do they want?* Health Promot J Austr, 2022.

400. Wilson, G.J., et al., *Range and Consistency of Cardiovascular Outcomes Reported by Clinical Trials in Kidney Transplant Recipients: A Systematic Review*. *Transplant Direct*, 2023. 9(1): p. e1398.
401. Wong, C., et al., *Delayed cord clamping: Impact on fetal cord blood gas analysis*. *Aust N Z J Obstet Gynaecol*, 2022.
402. Wood, A.J., et al., *Postpartum uptake of diabetes screening tests in women with gestational diabetes: The PANDORA study*. *Diabet Med*, 2022: p. e14999.
403. Wyld, K., et al., *Agenda-setting by young adults with type 1 diabetes and associations with emotional well-being/social support: results from an observational study*. *Intern Med J*, 2022.
404. Xie, J., et al., *Efficacy and Safety of Thalidomide As a Pre-Medication of Chemotherapy-Induced Nausea and Vomiting (CINV) Following Highly Emetogenic Chemotherapy (HEC): A Systematic Review and Meta-Analysis*. *Front Oncol*, 2021. 11: p. 818839.
405. Xiu, X., et al., *Genetic evidence for a causal relationship between type 2 diabetes and peripheral artery disease in both Europeans and East Asians*. *BMC Med*, 2022. 20(1): p. 300.
406. Yamada, N.K., et al., *Supraglottic Airways Compared With Face Masks for Neonatal Resuscitation: A Systematic Review*. *Pediatrics*, 2022. 150(3).
407. Yaxley, J., et al., *Interventional nephrology in Australia and New Zealand*. *J Vasc Access*, 2022: p. 1129729822107776.
408. Yıldız Bölükbaşı, E., et al., *Variable expressivity in a four-generation ACDMPV family with a non-coding hypermorphic SNV in trans to the frameshifting FOXF1 variant*. *Eur J Hum Genet*, 2022. 30(10): p. 1182-1186.
409. Zammit, A.P., et al., *A population-based study of the management of rectal malignant polyps and the use of trans-anal surgery*. *ANZ J Surg*, 2022. 92(11): p. 2949-2955.
410. Zammit, A.P., et al., *In comparison with polypectomy, colorectal resection is associated with improved survival for patients diagnosed with malignant polyps*. *Colorectal Dis*, 2022.
411. Zammit, A.P., et al., *Management of high and low risk malignant polyps: a population-wide analysis*. *Colorectal Dis*, 2022.
412. Zammit, A.P., et al., *Missing parameters in malignant polyp histology reports: can appropriate decisions be made?* *Pathology*, 2022.
413. Zammit, A.P., et al., *Patient and pathological predictors of management strategy for malignant polyps following polypectomy: a systematic review and meta-analysis*. *Int J Colorectal Dis*, 2022. 37(5): p. 1035-1047.
414. Zammit, A.P., et al., *Timing of surveillance colonoscopy following malignant colorectal polypectomy in Queensland*. *ANZ J Surg*, 2022.
415. Zestic, J., H.G. Liley, and P.M. Sanderson, *Similarity of expert clinicians' rank order of differential diagnoses in a newborn resuscitation context*. *Resusc Plus*, 2022. 11: p. 100263.
416. Zhang, H., et al., *Mendelian randomization study reveals a population-specific putative causal effect of type 2 diabetes in risk of cataract*. *Int J Epidemiol*, 2022. 50(6): p. 2024-2037.
417. Zhang, J., et al., *Comparative proteomic analysis of donor human milk pasteurized by hydrostatic high-pressure*. *Food Chem*, 2023. 403: p. 134264.
418. Zhang, J., et al., *Nanosecond pulsed electric field treatment of human milk: Effects on microbiological inactivation, whey proteome and bioactive protein*. *Food Chem*, 2023. 406: p. 135073.
419. Zhang, J., et al., *The Results of Different Heating Temperatures on Activities of Bioactive Proteins in Human Milk*. *J Hum Lact*, 2022: p. 8903344221124870.
420. Zhao, B., et al., *Interictal HFO and FDG-PET correlation predicts surgical outcome following SEEG*. *Epilepsia*, 2022.
421. Zhu, N., R. Campbell, and A.P. Sadasivan, *Tenosynovial giant cell tumours of the upper and lower cervical spine: two case reports*. *Spinal Cord Ser Cases*, 2022. 8(1): p. 72.
422. Zou, Z., et al., *Comprehensive biochemical and proteomic characterization of seasonal Australian camel milk*. *Food Chem*, 2022. 381: p. 132297.
423. Zou, Z., et al., *Physicochemical Properties and Whey Proteomes of Camel Milk Powders Produced by Different Concentration and Dehydration Processes*. *Foods*, 2022. 11(5).

